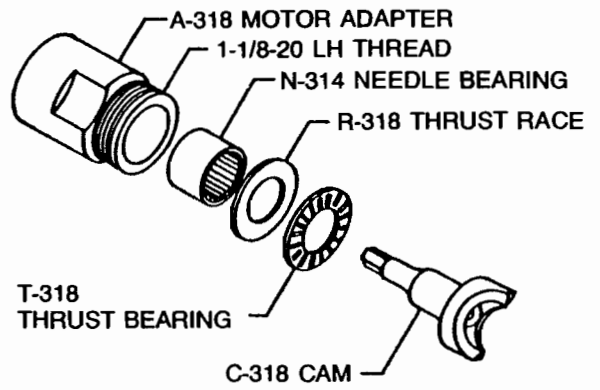
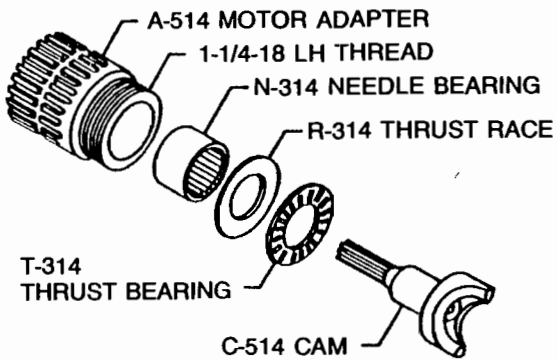


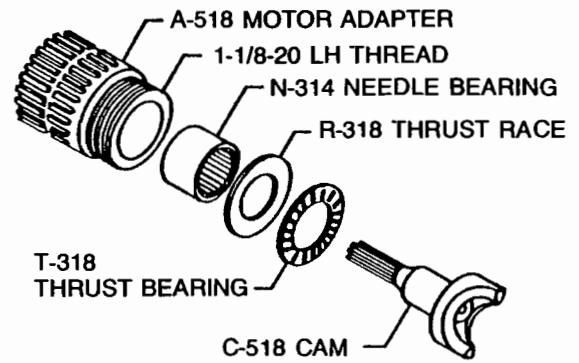
KI-314 ADAPTER KIT
FOR NO. 3 MOTOR



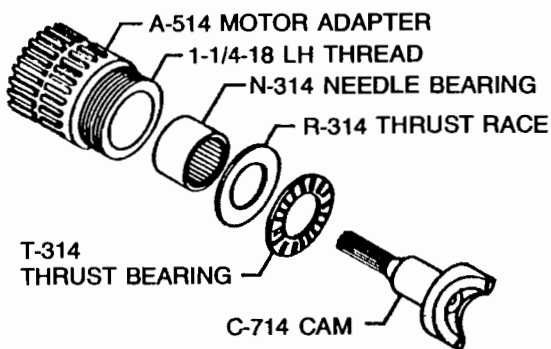
KI-318 ADAPTER KIT
FOR NO. 3 MOTOR



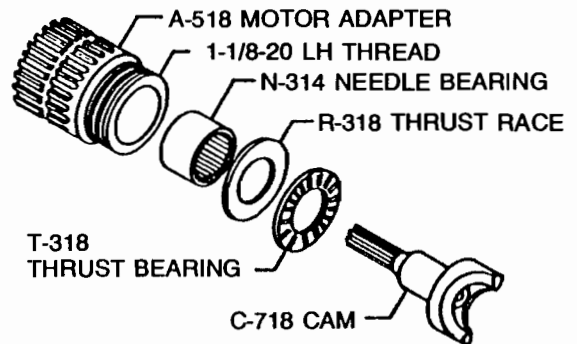
KI-514 ADAPTER KIT
FOR NO. 5 & 6 MOTOR



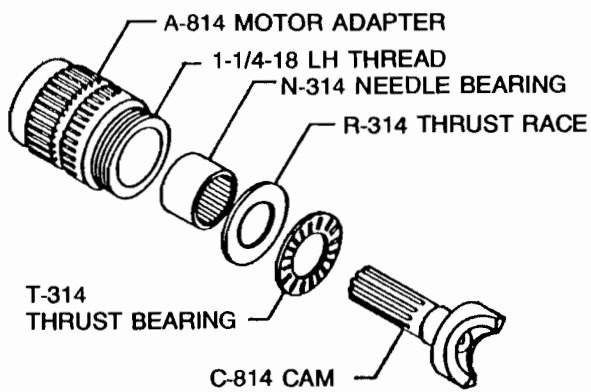
KI-518 ADAPTER KIT
FOR NO. 5 & 6 MOTOR



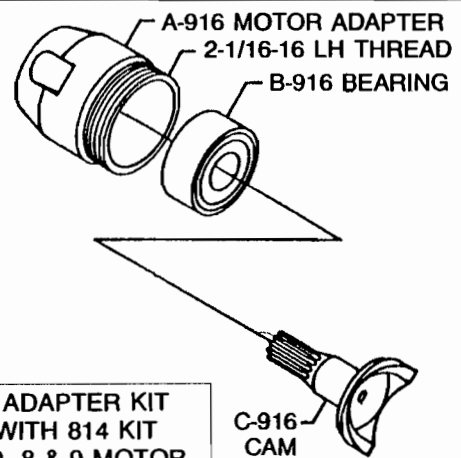
KI-714 ADAPTER KIT
FOR NO. 7 MOTOR



KI-718 ADAPTER KIT
FOR NO. 7 MOTOR



KI-814 ADAPTER KIT
FOR NO. 8 & 9 MOTOR



KI-916 ADAPTER KIT
USE WITH 814 KIT
FOR NO. 8 & 9 MOTOR

EXPLANATION OF THE NUMBERING SYSTEM

New numbering systems are always initially cumbersome to use. Take a few minutes to familiarize yourself with the system employed in this catalogue. The intent is to make the numbers descriptive of the parts.

ATTACHMENT numbers, for instance, always begin with two letters. The first letter indicates the thread size of the Housing:

- A = 1-1/8" Thread (Miniature Attachments)
- B = 1-1/4" Thread (Standard Attachments)
- C = 2-1/16" Thread (Large Heavy Duty Attachments)

The second letter indicates the length of the attachment:

- A = Standard Length
- B = 2" Extended Length
- C = 3" Extended Length

These two letters are followed by four digits which describe the tool width and thickness. The first two digits indicate the width in 16ths. of an inch and the last two digits indicate the thickness in 32nds. of an inch.

EXAMPLE: BA-1618 = a standard attachment, standard length with 1" wide side plates and 9/16" thick.

Attachments may also have a single digit as a suffix:

- 1 = 20° R.H. bent Housing
- 2 = 20° L.H. bent Housing
- 3 = 20° R.H. bent Side Plates
- 4 = 20° L.H. bent Side Plates
- 5 = 40° R.H. bent Housing & Side Plates
- 6 = 40° L.H. bent Housing & Side Plates

EXAMPLE: BB-1618-5 = a standard attachment, extended 2", 1" wide side plates, 9/16" thick and bent 40° Right Hand.

PUSH ROD ASSEMBLIES are also concerned with the same variables as attachments and therefore have identical part numbers except the last letter in the suffix is always "P".

SOCKET numbers have six digits and the possibility of several suffixes. The first four digits are identical to the four digits of the attachment numbers as explained above and therefore, when ordering complete attachments, do not need to be repeated. Only the last two digits need to be used. These digits indicate a specific hex size (see Socket Selection Tables), regardless of side plate width or attachment thickness. Even numbers are always single hex and odd numbers are always double hex.

EXAMPLE: 161816 = 1" wide side plates, 9/16" thick, 1/2" single hex or
201516 = 1-1/4" side plates, 15/32" thick, 1/2" single hex

Socket Suffix List:

- ER = extended Right Hand (Indicate Length in 16ths)
- EL = extended Left Hand (Indicate Length in 16ths)
- EB = extended Both Sides (Indicate Length in 16ths)
- MS = Magnetic-Solid (Indicate Hex Depth)
- HM = Magnetic-Hollow (Indicate Hex Depth and Thru Hole)
- BH = Blind Hex (Hex Part Way Thru)
- T = Threaded (Indicate Thread Size)
- G = Grooved
- SS = Single Square
- DS = Double Square

EXAMPLE: 161315-EB 8 = 1" wide side plates, 13/32" thick, 7/16" double hex, extended both sides 1/2"

HOUSING numbers, like push rods, side plates, pawls, etc., are used in various combinations in many different attachments. Numbers for these items have been assigned predicated on their most prevalent use. You should consult the Attachment Replacement Parts Sheet for specific numbers for individual attachments until you become familiar with these.

HOUSING numbers begin with a letter, followed by four digits and may also have a single digit, -1 or -2, as a suffix. The first letter, as in the attachment number, indicates the thread size: "A" = 1-1/8" thread; "B" = 1-1/4" thread; "C" = 2-1/16" thread. Since housings are not concerned with attachment length (a filler piece is used to extend housings), a second letter is not needed. The four digits define the attachment width and thickness, as described above. The suffix number, -1 or -2, is the same as in attachments, referring to a 20° R.H. or L.H. housing respectively.

EXAMPLE: B-1613-2 = Standard 1-1/4" thread, 1" wide, 13/32" thick, and bent 20° Left Hand

NOTE: As indicated before, this same housing may be used on other attachments that may be narrower or wider.

SIDE PLATE numbers also begin with a letter followed by four digits and may have a single -3 or -4 suffix. Unlike housings, a side plate is not concerned with the thread size of an attachment, but is concerned about the length. Therefore, the first letter of the side plate number refers to length. As with attachment numbers, A = standard length, B = 2" extended and C = 3" extended. The first two digits of the number defines the side plate width in 16ths. of an inch and the last two digits define the attachment thickness in 32nds. of an inch. The suffix of -3 or -4, as with attachments, indicates 20° bent side plates R.H. or L.H. Following the complete number is a C or T representing co'sunk or tapped.

EXAMPLE: B-2018-3T = 2" extended, 1-1/4" wide, 9/16" thick and bent 20° right hand and tapped

PAWL numbers begin with the letter P followed by the four digit number for attachment width and thickness. A possible suffix of -3 or -4 indicates they are used with 20° bent right hand or left hand side plates.

EXAMPLE: P-1618-3 = Pawl for 1" side plates, 9/16" thick and bent 20° Right Hand

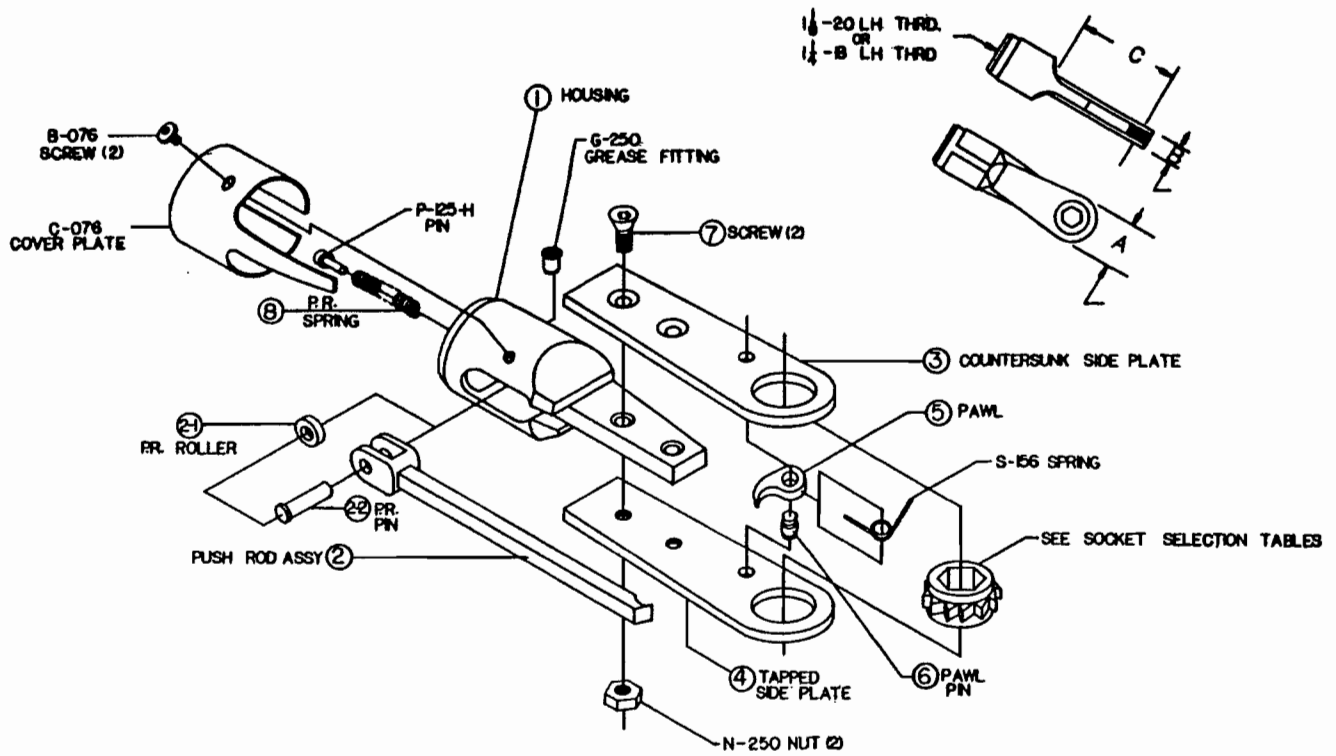
Springs; Pins, Bolts, Nuts, etc. have numbers beginning with their first letter followed by three digits indicating diameter. A letter suffix is used to indicate the various lengths required.

EXAMPLE: S-250-A = 1/4" diameter Push rod return spring for miniature housing
P-125 = 1/8" diameter pawl pin
B-250-C = 1/4" diameter side plate bolt for 9/16" thick attachments
N-250 = Nut for 1/4" diameter side plate bolt

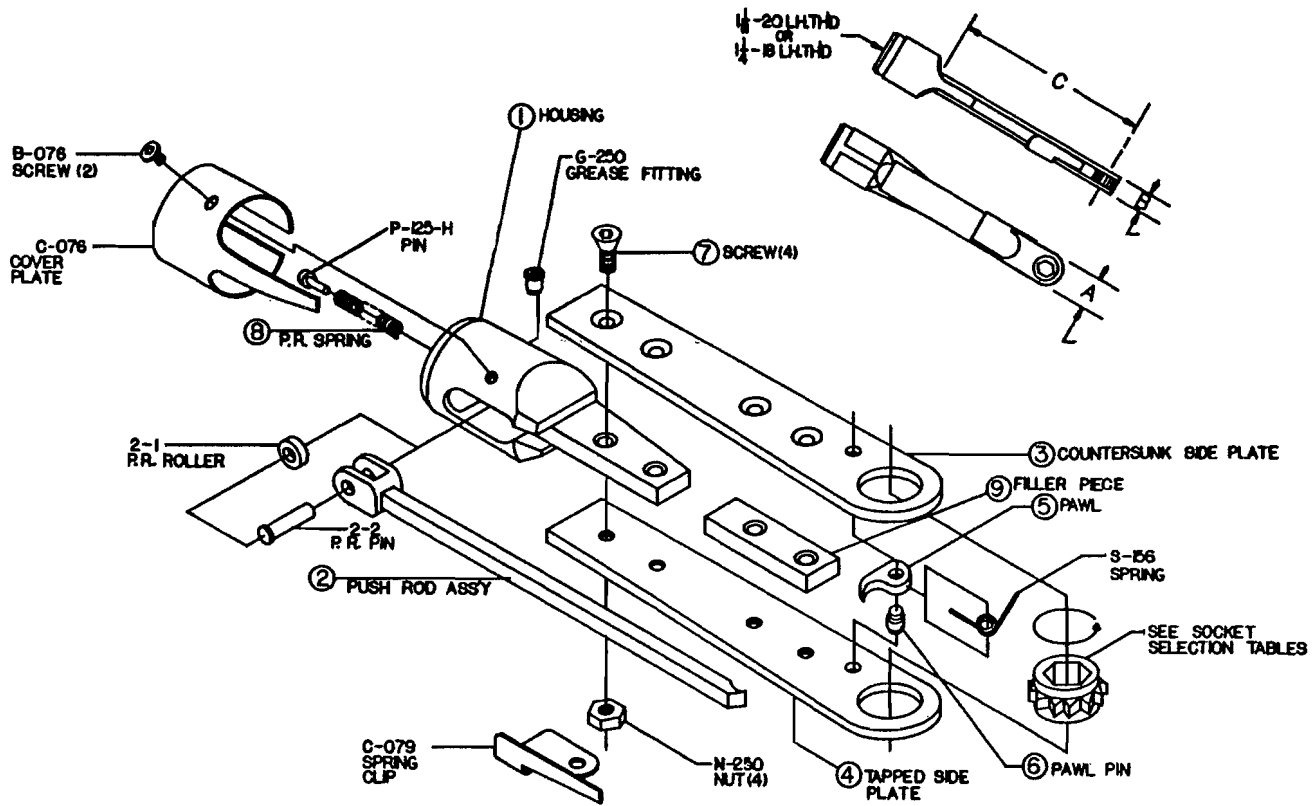
We hope this brief explanation of the numbering system will enable you to more easily utilize our new catalogue. If you have any additional questions, please contact us.

INDEX TO REPLACEMENT ATTACHMENT PARTS

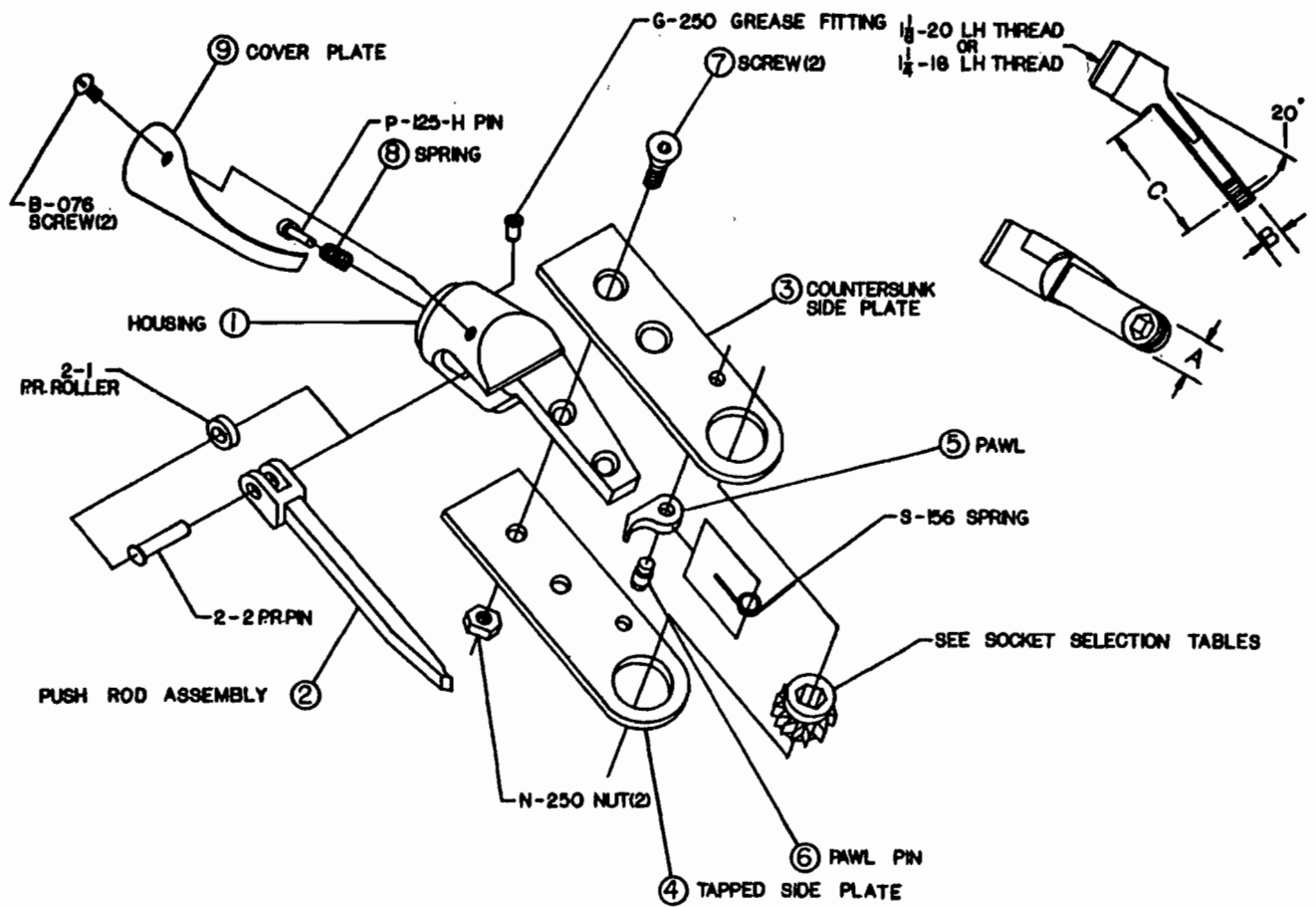
ATTACH NUMBER	CODE	PAGE	G.D. NUMBER	ATTACH NUMBER	CODE	PAGE	G.D. NUMBER	ATTACH NUMBER	CODE	PAGE	G.D. NUMBER
AA-0910	000	1	AA-9D-6435-9	BC-1418-1	093	8		BA-1815-2	161	7	504241
AA-1211	001	1	AA-9D-6435-12	BC-1418-2	094	8		BB-1815	161	7	
AA-1211-1	002	3	502914	BA-1513	095	5	502667	BB-1815-1	163	8	
AA-1211-2	003	3		BA-1513-1	096	7	504232	BB-1815-2	164	8	
AB-1211	004	2		BA-1513-2	097	7	504238	BA-1818	165	5	AA-9D-6096-18
AB-1211-1	005	4		BB-1513	098	6		BA-1818-1	166	7	504159
AB-1211-2	006	4		BB-1513-1	099	8		BA-1818-2	167	7	504165
AA-1216	007	1	AA-9D-5171-12	BB-1513-2	100	8		BA-1818-3	168	9	AA-12797-18
AA-1216-1	008	3	AA-19099-12	BA-1515	101	5	502668	BA-1818-4	169	9	AA-17769-18
AA-1216-2	009	3	AA-19100-12	BA-1515-1	102	7	504231	BA-1818-5	170	10	506162
AB-1216	010	2		BA-1515-2	103	7	504237	BA-1818-6	171	10	506166
AB-1216-1	011	4		BB-1515	104	6		BB-1818	172	6	AA-9D-6885-18
AB-1216-2	012	4		BB-1515-1	105	8		BB-1818-1	173	8	
AA-1311	013	1	AA-9D-6435-13	BB-1515-2	106	8		BB-1818-2	174	8	
AA-1311-1	014	3		BA-1518	107	5	AA-9D-6096-15	BB-1818-3	175	11	
AA-1311-2	015	3		BA-1518-1	108	7	504157	BB-1818-4	176	11	
AB-1311	016	2		BA-1518-2	109	7	504163	BB-1818-5	177	12	
AB-1311-1	017	4		BA-1518-3	110	9	AA-12797-15	BB-1818-6	178	12	
AB-1311-2	018	4		BA-1518-4	111	9	AA-17769-15	BC-1818	179	6	
AA-1316	019	1	AA-9D-5171-13	BA-1518-5	112	10	506160	BC-1818-1	180	8	
AA-1316-1	020	3	AA-19099-13	BA-1518-6	113	10	506164	BC-1818-2	181	8	
AA-1316-2	021	3	AA-19100-13	BB-1518	114	6		BA-2013	182	5	
AB-1316	022	2		BB-1518-1	115	8		BA-2013-1	183	7	
AB-1316-1	023	4		BB-1518-2	116	8		BA-2013-2	184	7	
AB-1316-2	024	4		BB-1518-3	117	11		BB-2013	185	6	
BA-1211	050	1	AA-9D-6595-12	BB-1518-4	118	11		BB-2013-1	186	8	
BA-1211-1	051	3		BB-1518-5	119	12		BB-2013-2	187	8	
BA-1211-2	052	3		BB-1518-6	120	12		BA-2015	188	5	502672
BB-1211	053	2		BC-1518	121	6	AA-11306-15	BA-2015-1	189	7	504236
BB-1211-1	054	4		BC-1518-1	122	8	507551	BA-2015-2	190	7	504242
BB-1211-2	055	4		BC-1518-2	123	8	515204	BB-2015	191	6	
BA-1216	056	1	AA-9D-6634-12	BA-1613	124	5	502669	BB-2015-1	192	8	
BA-1216-1	057	3		BA-1613-1	125	7	504234	BB-2015-2	193	8	
BA-1216-2	058	3		BA-1613-2	126	7	504240	BA-2018	194	5	AA-9D-6096-20
BB-1216	059	2		BB-1613	127	6		BA-2018-1	195	7	504160
BB-1216-1	060	4		BB-1613-1	128	8		BA-2018-2	196	7	504166
BB-1216-2	061	4		BB-1613-2	129	8		BA-2018-3	197	9	AA-12797-20
BA-1311	062	1	AA-9D-6595-13	BA-1615	130	5	502670	BA-2018-4	198	9	AA-17769-20
BA-1311-1	063	3		BA-1615-1	131	7	504233	BA-2018-5	199	10	506163
BA-1311-2	064	3		BA-1615-2	132	7	504239	BA-2018-6	200	10	506167
BB-1311	065	2		BB-1615	133	6		BB-2018	201	6	
BB-1311-1	066	4		BB-1615-1	134	8		BB-2018-1	202	8	
BB-1311-2	067	4		BB-1615-2	135	8		BB-2018-2	203	8	
BA-1316	068	1	AA-9D-6634-13	BA-1618	136	5	AA-9D-6096-16	BB-2018-3	204	11	
BA-1316-1	069	3		BA-1618-1	137	7	504158	BB-2018-4	205	11	
BA-1316-2	070	3		BA-1618-2	138	7	504164	BB-2018-5	206	12	
BB-1316	071	2		BA-1618-3	139	9	AA-12797-16	BB-2018-6	207	12	
BB-1316-1	072	4		BA-1618-4	140	9	AA-17769-16	BC-2018	208	6	AA-11306-20
BB-1316-2	073	4		BA-1618-5	141	10	506161	BC-2018-1	209	8	507553
BA-1413	074	5		BA-1618-6	142	10	506165	BC-2018-2	210	8	515206
BA-1413-1	075	7		BB-1618	143	6	AA-9D-6885-16	BA-2518	211	5	AA-9D-6096-25
BA-1413-2	076	7		BB-1618-1	144	8		BA-2518-1	212	7	504161
BB-1413	077	6		BB-1618-2	145	8		BA-2518-2	213	7	504167
BB-1413-1	078	8		BB-1618-3	146	11		BA-2718	214	13	AA-17994-27
BB-1413-2	079	8		BB-1618-4	147	11		BA-2718-1	215	13	
BA-1415	080	5		BB-1618-5	148	12		BA-2920	216	5	AA-9D-6096-29
BA-1415-1	081	7		BB-1618-6	149	12		BA-2920-1	217	7	504162
BA-1415-2	082	7		BC-1618	150	6	AA-13306-16	BA-2920-2	218	7	504168
BB-1415	083	6		BC-1618-1	151	8	507552	BA-3720	219	5	AA-9D-6096-37
BB-1415-1	084	8		BC-1618-2	152	8	515205	BA-3720-1	220	7	
BB-1415-2	085	8		BA-1813	153	5		BA-3720-2	221	7	
BA-1418	086	5		BA-1813-1	154	7		CA-2028	240	14	AA-26680-20
BA-1418-1	087	7		BA-1813-2	155	7		CA-2428	241	14	AA-26680-24
BA-1418-2	088	7		BB-1813	156	6		CA-3228	242	14	AA-26680-32
BB-1418	089	6		BB-1813-1	157	8		CA-4028	243	14	AA-26680-40
BB-1418-1	090	8		BB-1813-2	158	8	502671	CA-4832	244	14	AA-26680-48
BB-1418-2	091	8		BA-1815	159	5	504235	CA-5632	245	14	AA-26680-56
BC-1418	092	6		BA-1815-1	160	7	504241				



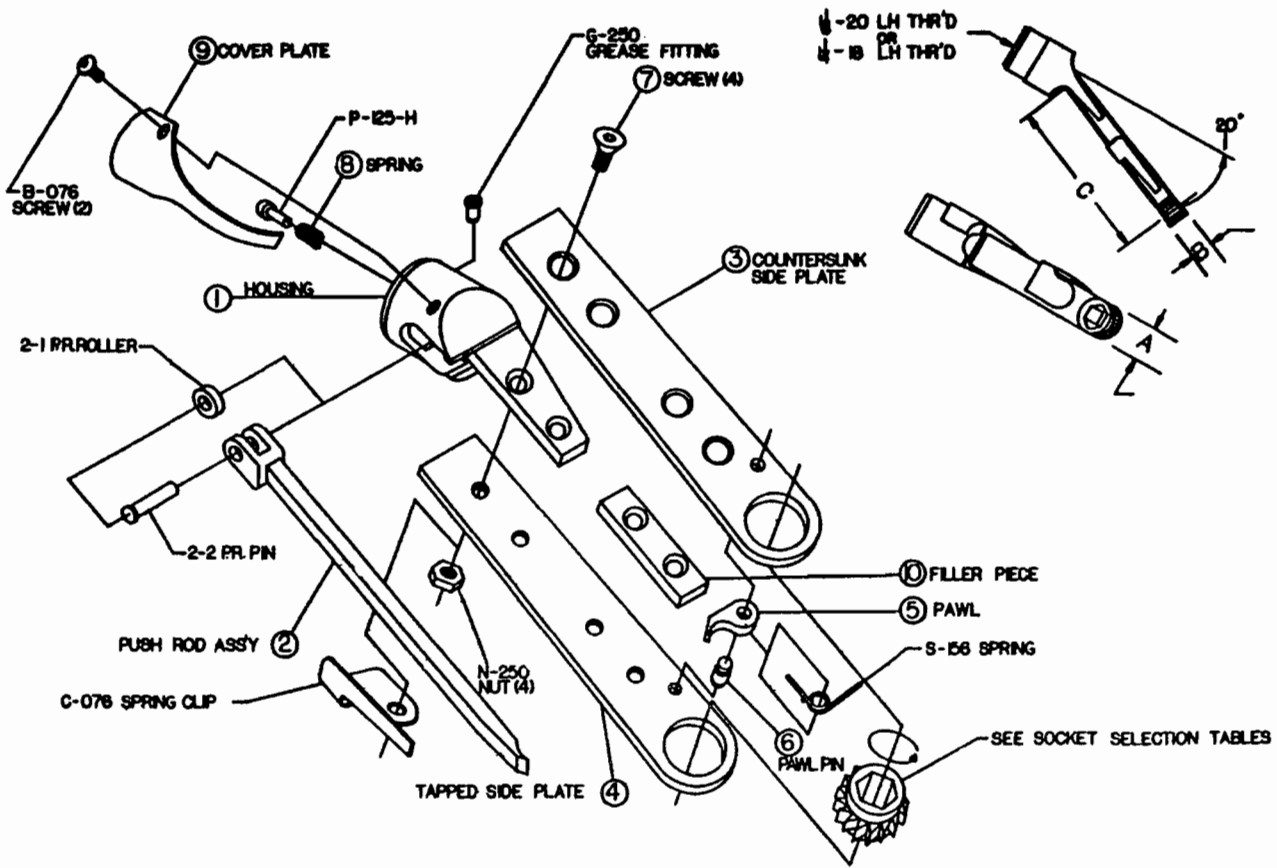
PART NUMBER ϕ 1		2	2-1	2-2	3	4	5	6	7	8	
ATTACH. NUMBER	CODE	HOUSING	P.R. ASSEMBLY	P.R. ROLLER	P.R. PIN	CO'SUNK PLATE	TAPPED PLATE	PAWL	PAWL PIN	S.P. SCREW	P.R. SPRING
AA-0910	000	A-1211	AA-0910-P	R-437	P-218	A-0910-C	A-0910-T	P-1211	P-156-A	B-250-A	S-250-A
AA-1211	001	A-1211	AA-1211-P	R-437	P-218	A-1211-C	A-1211-T	P-1211	P-156-A	B-250-A	S-250-A
AA-1216	007	A-1216	AA-1216-P	R-437	P-218	A-1216-C	A-1216-T	P-1216	P-156-B	B-250-C	S-250-A
AA-1311	013	A-1211	AA-1211-P	R-437	P-218	A-1311-C	A-1311-T	P-1211	P-156-A	B-250-A	S-250-A
AA-1316	019	A-1216	AA-1216-P	R-437	P-218	A-1316-C	A-1316-T	P-1216	P-156-B	B-250-C	S-250-A
BA-1211	050	B-1211	BA-1211-P	R-500	P-250	A-1211-C	A-1211-T	P-1211	P-156-A	B-250-A	S-250-B
BA-1216	056	B-1216	BA-1216-P	R-500	P-250	A-1216-C	A-1216-T	P-1216	P-156-B	B-250-C	S-250-B
BA-1311	062	B-1211	BA-1211-P	R-500	P-250	A-1311-C	A-1311-T	P-1211	P-156-A	B-250-A	S-250-B
BA-1316	068	B-1216	BA-1216-P	R-500	P-250	A-1316-C	A-1316-T	P-1216	P-156-B	B-250-C	S-250-B



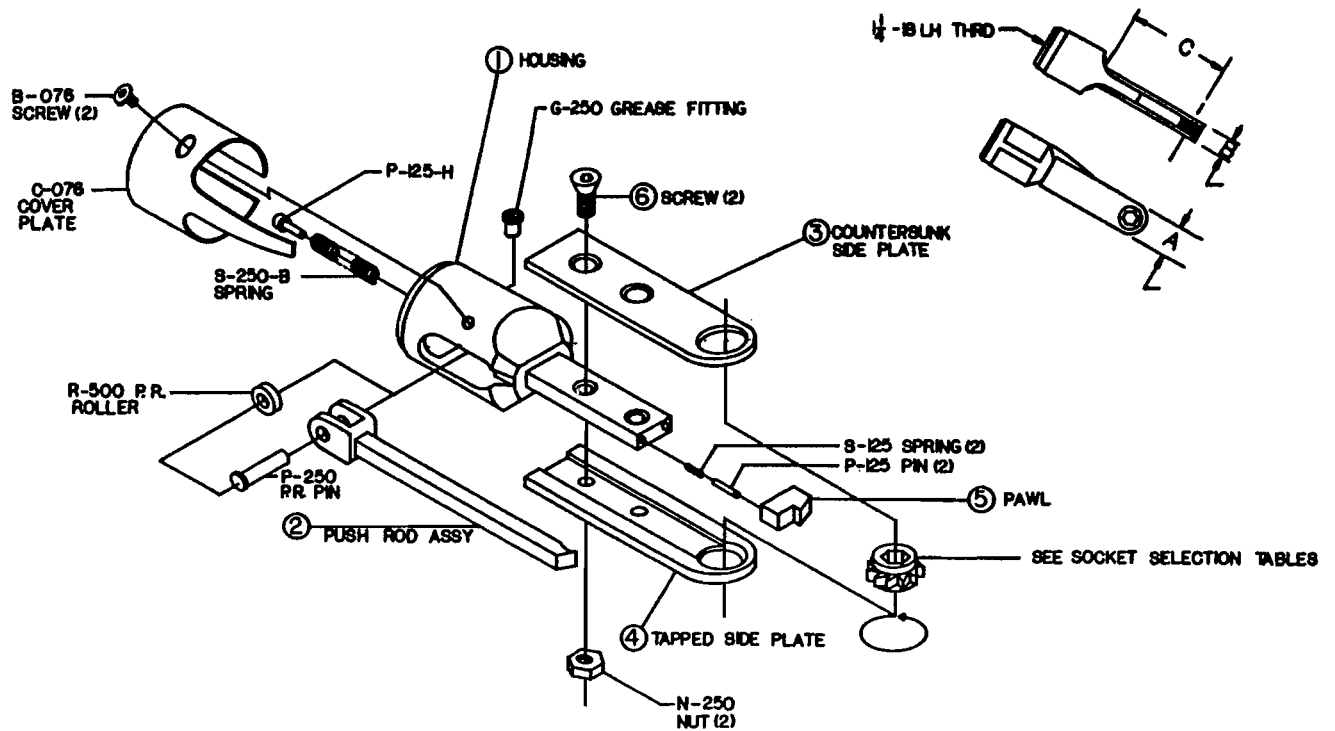
PART NUMBER € 1		2	2-1	2-2	3	4	5	6	7	8	9	
ATTACH. NUMBER	CODE	HOUSING	P.R. ASSEMBLY	P.R. ROLLER	P.R. PIN	CO'SUNK PLATE	TAPPED PLATE	PAWL	PAWL PIN	S.P. SCREW	P.R. SPRING	FILLER PIECE
AB-1211	004	A-1211	AB-1211-P	R-437	P-218	B-1211-C	B-1211-T	P-1211	P-156-A	B-250-A	S-250-A	F-1211
AB-1216	010	A-1216	AB-1216-P	R-437	P-218	B-1216-C	B-1216-T	P-1216	P-156-B	B-250-C	S-250-A	F-1216
AB-1311	016	A-1211	AB-1211-P	R-437	P-218	B-1311-C	B-1311-T	P-1211	P-156-A	B-250-A	S-250-A	F-1211
AB-1316	022	A-1216	AB-1216-P	R-437	P-218	B-1316-C	B-1316-T	P-1216	P-156-B	B-250-C	S-250-A	F-1216
BB-1211	053	B-1211	BB-1211-P	R-500	P-250	B-1211-C	B-1211-T	P-1211	P-156-A	B-250-A	S-250-B	F-1211
BB-1216	059	B-1216	BB-1216-P	R-500	P-250	B-1216-C	B-1216-T	P-1216	P-156-B	B-250-C	S-250-B	F-1216
BB-1311	065	B-1211	BB-1211-P	R-500	P-250	B-1311-C	B-1311-T	P-1211	P-156-A	B-250-A	S-250-B	F-1211
BB-1316	071	B-1216	BB-1216-P	R-500	P-250	B-1316-C	B-1316-T	P-1216	P-156-B	B-250-C	S-250-B	F-1216



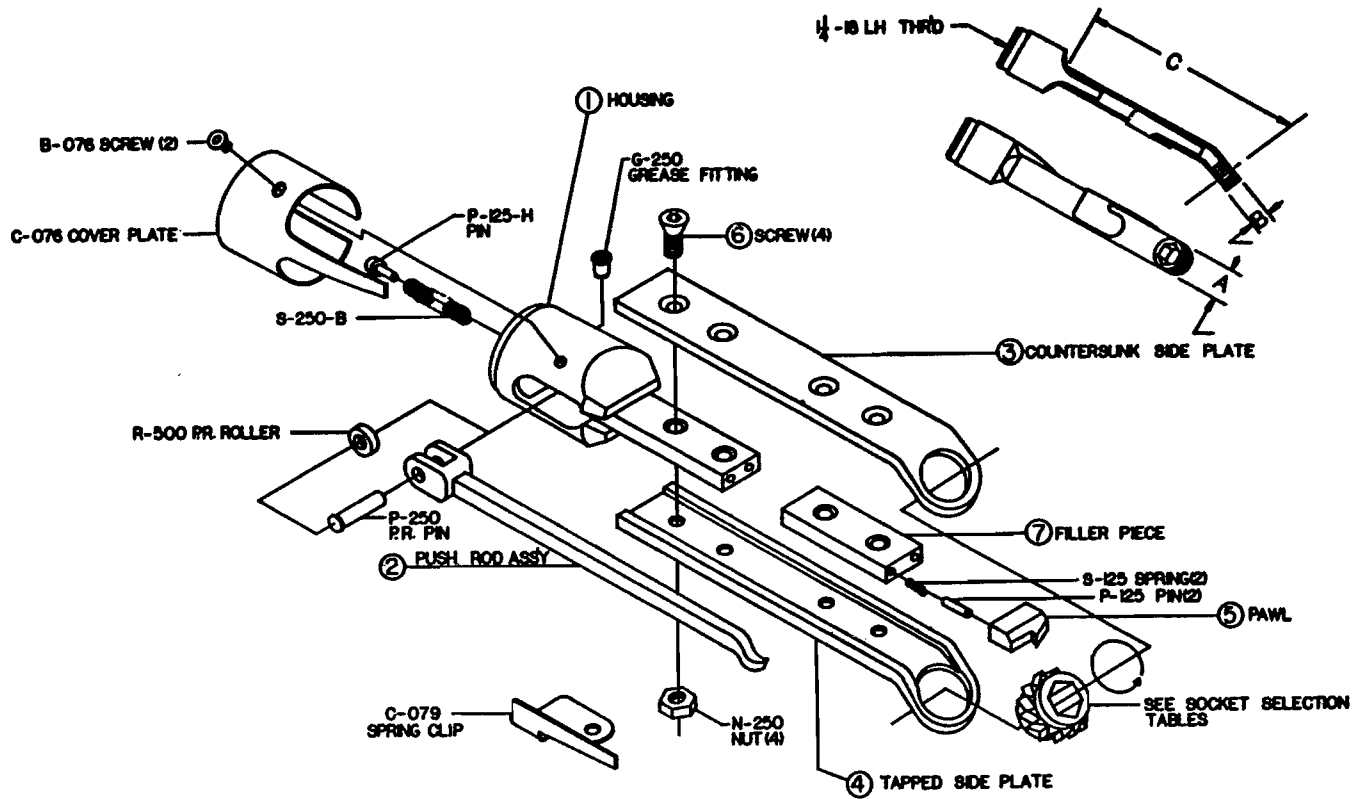
PART NUMBER		1	2	2-1	2-2	3	4	5	6	7	8	9
ATTACH. NUMBER	CODE	HOUSING	P.R. ASSEMBLY	P.R. ROLLER	P.R. PIN	CO'SUNK PLATE	TAPPED PLATE	PAWL	PAWL PIN	S.P. SCREW	P.R. SPRING	FILLER PIECE
AA-1211-1	002	A-1211-1	AA-1211-P	R-437	P-218	A-1211-C	A-1211-T	P-1211	P-156-A	B-250-A	S-250-A	C-077
AA-1211-2	003	A-1211-2	AA-1211-P	R-437	P-218	A-1211-C	A-1211-T	P-1211	P-156-A	B-250-A	S-250-A	C-078
AA-1216-1	008	A-1216-1	AA-1216-P	R-437	P-218	A-1216-C	A-1216-T	P-1216	P-156-B	B-250-C	S-250-A	C-077
AA-1216-2	009	A-1216-2	AA-1216-P	R-437	P-218	A-1216-C	A-1216-T	P-1216	P-156-B	B-250-C	S-250-A	C-078
AA-1311-1	014	A-1211-1	AA-1211-P	R-437	P-218	A-1311-C	A-1311-T	P-1211	P-156-A	B-250-A	S-250-A	C-077
AA-1311-2	015	A-1211-2	AA-1211-P	R-437	P-218	A-1311-C	A-1311-T	P-1211	P-156-A	B-250-A	S-250-A	C-078
AA-1316-1	020	A-1216-1	AA-1216-P	R-437	P-218	A-1316-C	A-1316-T	P-1216	P-156-B	B-250-C	S-250-A	C-077
AA-1316-2	021	A-1216-2	AA-1216-P	R-437	P-218	A-1316-C	A-1316-T	P-1216	P-156-B	B-250-C	S-250-A	C-078
BA-1211-1	051	B-1211-1	BA-1211-P	R-500	P-250	A-1211-C	A-1211-T	P-1211	P-156-A	B-250-A	S-250-B	C-077
BA-1211-2	052	B-1211-2	BA-1211-P	R-500	P-250	A-1211-C	A-1211-T	P-1211	P-156-A	B-250-A	S-250-B	C-078
BA-1216-1	057	B-1216-1	BA-1216-P	R-500	P-250	A-1216-C	A-1216-T	P-1216	P-156-B	B-250-C	S-250-B	C-077
BA-1216-2	058	B-1216-2	BA-1216-P	R-500	P-250	A-1216-C	A-1216-T	P-1216	P-156-B	B-250-C	S-250-B	C-078
BA-1311-1	063	B-1211-1	BA-1211-P	R-500	P-250	A-1311-C	A-1311-T	P-1211	P-156-A	B-250-A	S-250-B	C-077
BA-1311-2	064	B-1211-2	BA-1211-P	R-500	P-250	A-1311-C	A-1311-T	P-1211	P-156-A	B-250-A	S-250-B	C-078
BA-1316-1	069	B-1216-1	BA-1216-P	R-500	P-250	A-1316-C	A-1316-T	P-1216	P-156-B	B-250-C	S-250-B	C-077
BA-1316-2	070	B-1216-2	BA-1216-P	R-500	P-250	A-1316-C	A-1316-T	P-1216	P-156-B	B-250-C	S-250-B	C-078



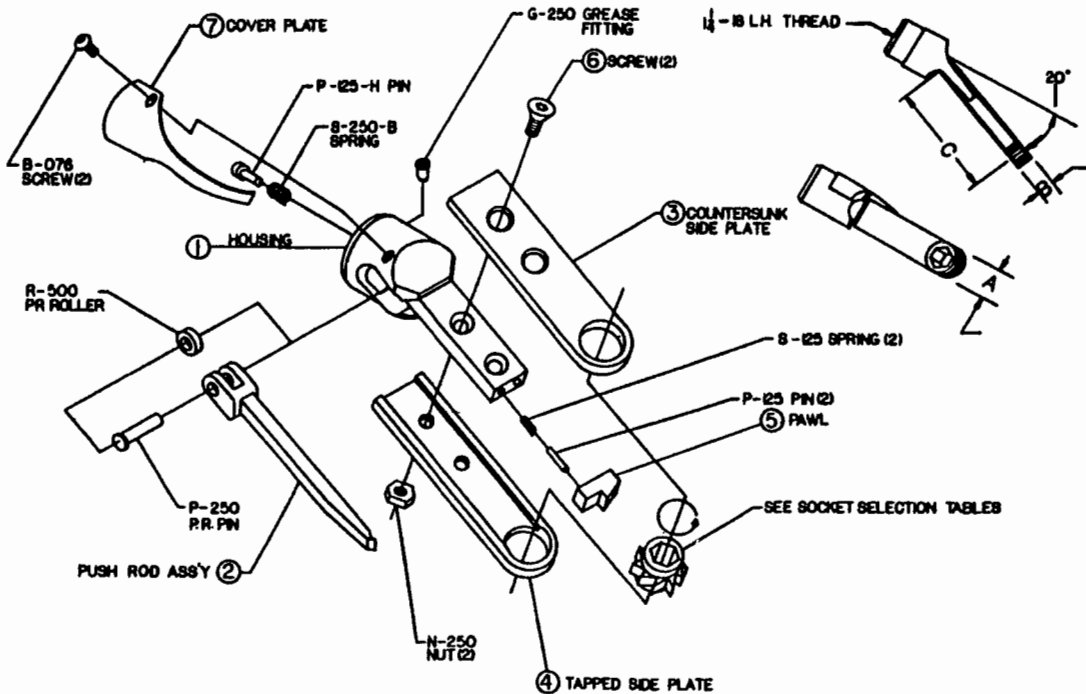
PART NUMBER ϕ 1		2	2-1	2-2	3	4	5	6	7	8	9	10	
ATTACH. NUMBER	CODE	HOUSING	P.R. ASSEM.	P.R. ROLLER	P.R. PIN	CO'SUNK PLATE	TAPPED PLATE	PAWL	PAWL PIN	S.P. SCREW	P.R. SPRING	COVER PLATE	FILLER PIECE
AB-1211-1	005	A-1211-1	AB-1211-P	R-437	P-218	B-1211-C	B-1211-T	P-1211	P-156-A	B-250-A	S-250-A	C-077	F-1211
AB-1211-2	006	A-1211-2	AB-1211-P	R-437	P-218	B-1211-C	B-1211-T	P-1211	P-156-A	B-250-A	S-250-A	C-078	F-1211
AB-1216-1	011	A-1216-1	AB-1216-P	R-437	P-218	B-1216-C	B-1216-T	P-1216	P-156-B	B-250-C	S-250-A	C-077	F-1216
AB-1216-2	012	A-1216-2	AB-1216-P	R-437	P-218	B-1216-C	B-1216-T	P-1216	P-156-B	B-250-C	S-250-A	C-078	F-1216
AB-1311-1	017	A-1211-1	AB-1211-P	R-437	P-218	B-1311-C	B-1311-T	P-1211	P-156-A	B-250-A	S-250-A	C-077	F-1211
AB-1311-2	018	A-1211-2	AB-1211-P	R-437	P-218	B-1311-C	B-1311-T	P-1211	P-156-A	B-250-A	S-250-A	C-078	F-1211
AB-1316-1	023	A-1216-1	AB-1216-P	R-437	P-218	B-1316-C	B-1316-T	P-1216	P-156-B	B-250-C	S-250-A	C-077	F-1216
AB-1316-2	024	A-1216-2	AB-1216-P	R-437	P-218	B-1316-C	B-1316-T	P-1216	P-156-B	B-250-C	S-250-A	C-078	F-1216
BB-1211-1	054	B-1211-1	BB-1211-P	R-500	P-250	B-1211-C	B-1211-T	P-1211	P-156-A	B-250-A	S-250-B	C-077	F-1211
BB-1211-2	055	B-1211-2	BB-1211-P	R-500	P-250	B-1211-C	B-1211-T	P-1211	P-156-A	B-250-A	S-250-B	C-078	F-1211
BB-1216-1	060	B-1216-1	BB-1216-P	R-500	P-250	B-1216-C	B-1216-T	P-1216	P-156-B	B-250-C	S-250-B	C-077	F-1216
BB-1216-2	061	B-1216-2	BB-1216-P	R-500	P-250	B-1216-C	B-1216-T	P-1216	P-156-B	B-250-C	S-250-B	C-078	F-1216
BB-1311-1	066	B-1211-1	BB-1211-P	R-500	P-250	B-1311-C	B-1311-T	P-1211	P-156-A	B-250-A	S-250-B	C-077	F-1211
BB-1311-2	067	B-1211-2	BB-1211-P	R-500	P-250	B-1311-C	B-1311-T	P-1211	P-156-A	B-250-A	S-250-B	C-078	F-1211
BB-1316-1	072	B-1216-1	BB-1216-P	R-500	P-250	B-1316-C	B-1316-T	P-1216	P-156-B	B-250-C	S-250-B	C-077	F-1216
BB-1316-2	073	B-1216-2	BB-1216-P	R-500	P-250	B-1316-C	B-1316-T	P-1216	P-156-B	B-250-C	S-250-B	C-078	F-1216



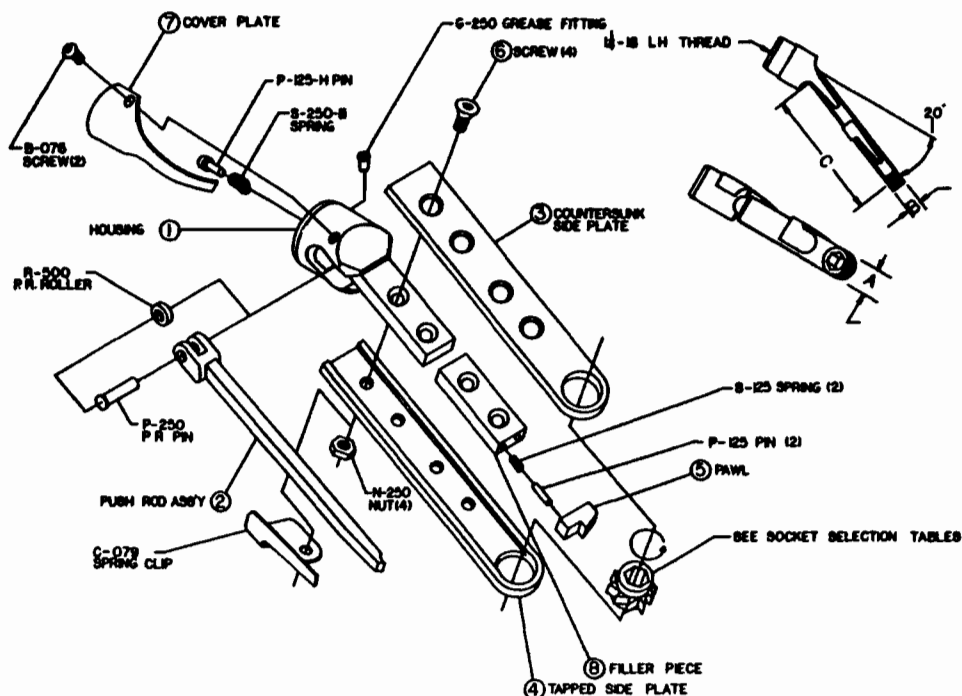
PART NUMBER		1	2	3	4	5	6
ATTACH. NUMBER	CODE	HOUSING	P.R. ASSEMBLY	CO'SUNK PLATE	TAPPED PLATE	PAWL	S.P. SCREW
BA-1413	074	B-1613	BA-1513-P	A-1413-C	A-1413-T	P-1413	B-250-B
BA-1415	080	B-1613	BA-1513-P	A-1418-C	A-1418-T	P-1413	B-250-B
BA-1418	086	B-1618	BA-1518-P	A-1418-C	A-1418-T	P-1418	B-250-C
BA-1513	095	B-1613	BA-1513-P	A-1513-C	A-1513-T	P-1613	B-250-B
BA-1515	101	B-1613	BA-1513-P	A-1518-C	A-1518-T	P-1613	B-250-B
BA-1518	107	B-1618	BA-1518-P	A-1518-C	A-1518-T	P-1618	B-250-C
BA-1613	124	B-1613	BA-1613-P	A-1613-C	A-1613-T	P-1613	B-250-B
BA-1615	130	B-1613	BA-1613-P	A-1618-C	A-1618-T	P-1613	B-250-B
BA-1618	136	B-1618	BA-1618-P	A-1618-C	A-1618-T	P-1618	B-250-C
BA-1813	153	B-1613	BA-1513-P	A-1813-C	A-1813-T	P-2013	B-250-B
BA-1815	159	B-1613	BA-1513-P	A-1818-C	A-1818-T	P-2013	B-250-B
BA-1818	165	B-1618	BA-1518-P	A-1818-C	A-1818-T	P-2018	B-250-C
BA-2013	182	B-1613	BA-1613-P	A-2013-C	A-2013-T	P-2013	B-250-B
BA-2015	188	B-1613	BA-1613-P	A-2018-C	A-2018-T	P-2013	B-250-B
BA-2018	194	B-1618	BA-1618-P	A-2018-C	A-2018-T	P-2018	B-250-C
BA-2518	211	B-1618	BA-1618-P	A-2518-C	A-2518-T	P-2018	B-250-C
BA-2920	216	B-1618	BA-2920-P	A-2920-C	A-2920-T	P-2920	B-250-D
BA-3720	219	B-1618	BA-2920-P	A-3720-C	A-3720-T	P-2018	B-250-D



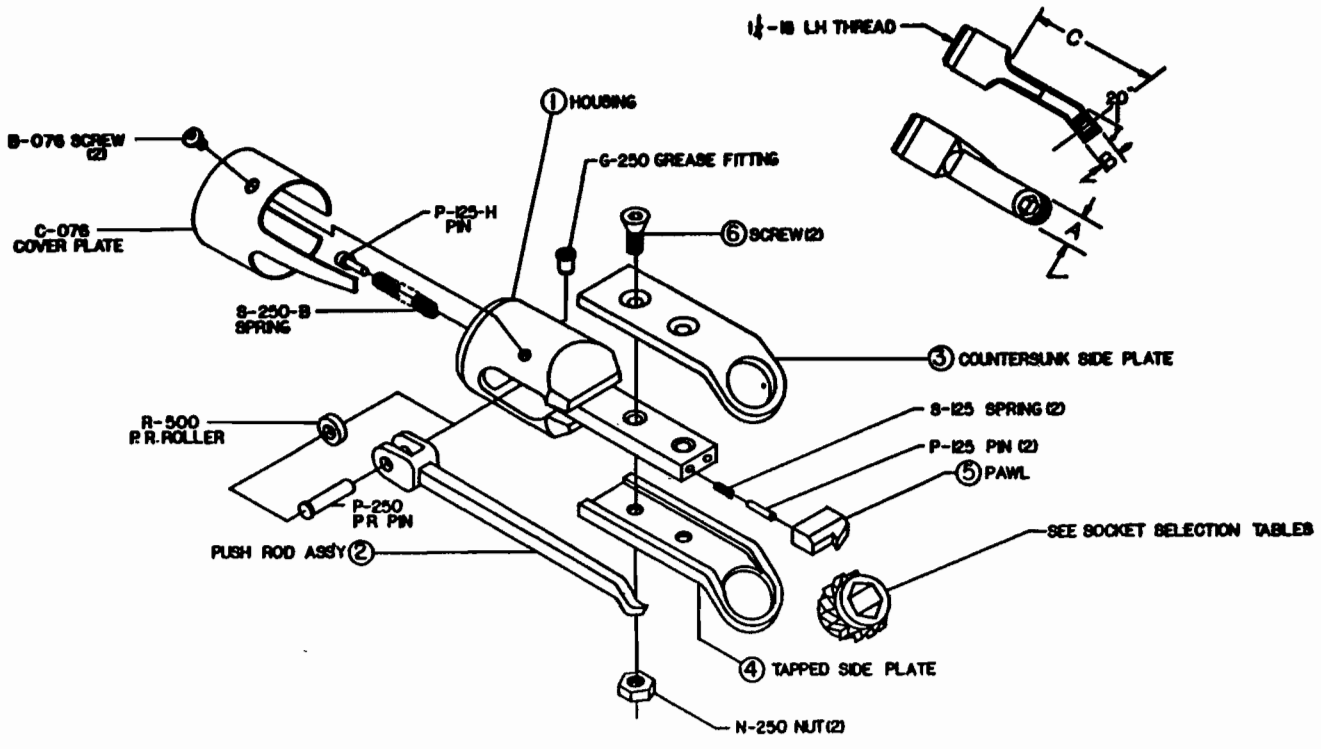
PART NUMBER		1	2	3	4	5	6	7
ATTACH. NUMBER	CODE	HOUSING	P.R. ASSEMBLY	CO'SUNK PLATE	TAPPED PLATE	PAWL	S.P. SCREW	FILLER PIECE
BB-1518-3	117	B-1618	BB-1618-3P	B-1518-3C	B-1518-3T	P-1618-3	B-250-C	F-1618
BB-1518-4	118	B-1618	BB-1618-4P	B-1518-3C	B-1518-3T	P-1618-4	B-250-C	F-1618
BB-1618-3	146	B-1618	BB-1618-3P	B-1618-3C	B-1618-3T	P-1618-3	B-250-C	F-1618
BB-1618-4	147	B-1618	BB-1618-4P	B-1618-3C	B1618-3T	P-1618-4	B-250-C	F-1618
BB-1818-3	175	B-1618	BB-1618-3P	B-1818-3C	B-1818-3T	P-1818-3	B-250-C	F-1618
BB-1818-4	176	B-1618	BB-1618-4P	B-1818-3C	B-1818-3T	P-1818-4	B-250-C	F-1618
BB-2018-3	204	B-1618	BB-1618-3P	B-2018-3C	B-2018-3T	P-2018-3	B-250-C	F-1618
BB-2018-4	205	B-1618	BB-1618-4P	B-2018-3C	B-2018-3T	P-2018-4	B-250-C	F-1618



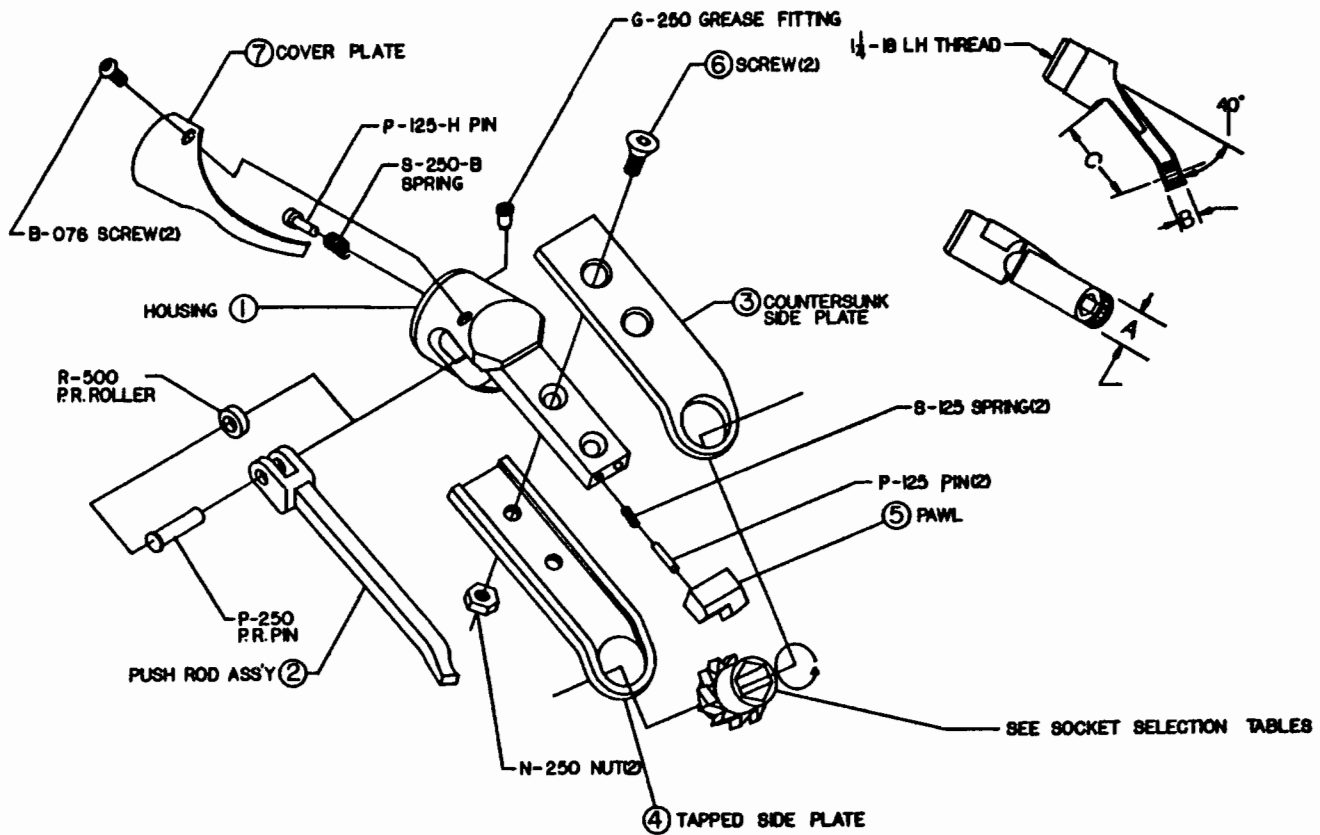
PART NUMBER		1	2	3	4	5	6	7
ATTACH. NUMBER	CODE	HOUSING	P.R. ASSEMBLY	CO'SUNK PLATE	TAPPED PLATE	PAWL	S.P. SCREW	COVER PLATE
BA-1413-1	075	B-1613-1	BA-1513-P	A-1413-C	A-1413-T	P-1413	B-250-B	C-077
BA-1413-2	076	B-1613-2	BA-1513-P	A-1413-C	A-1413-T	P-1413	B-250-B	C-078
BA-1415-1	081	B-1613-1	BA-1513-P	A-1418-C	A-1418-T	P-1413	B-250-B	C-077
BA-1415-2	082	B-1613-2	BA-1513-P	A-1418-C	A-1418-T	P-1413	B-250-B	C-078
BA-1418-1	087	B-1618-1	BA-1518-P	A-1418-C	A-1418-T	P-1418	B-250-C	C-077
BA-1418-2	088	B-1618-2	BA-1518-P	A-1418-C	A-1418-T	P-1418	B-250-C	C-078
BA-1513-1	096	B-1613-1	BA-1513-P	A-1513-C	A-1513-T	P-1613	B-250-B	C-077
BA-1513-2	097	B-1613-2	BA-1513-P	A-1513-C	A-1513-T	P-1613	B-250-B	C-078
BA-1515-1	102	B-1613-1	BA-1513-P	A-1518-C	A-1518-T	P-1613	B-250-B	C-077
BA-1515-2	103	B-1613-2	BA-1513-P	A-1518-C	A-1518-T	P-1613	B-250-B	C-078
BA-1518-1	108	B-1618-1	BA-1518-P	A-1518-C	A-1518-T	P-1618	B-250-C	C-077
BA-1518-2	109	B-1618-2	BA-1518-P	A-1518-C	A-1518-T	P-1618	B-250-C	C-078
BA-1613-1	125	B-1613-1	BA-1613-P	A-1613-C	A-1613-T	P-1613	B-250-B	C-077
BA-1613-2	126	B-1613-2	BA-1613-P	A-1613-C	A-1613-T	P-1613	B-250-B	C-078
BA-1615-1	131	B-1613-1	BA-1613-P	A-1618-C	A-1618-T	P-1613	B-250-B	C-077
BA-1615-2	132	B-1613-2	BA-1613-P	A-1618-C	A-1618-T	P-1613	B-250-B	C-078
BA-1618-1	137	B-1618-1	BA-1618-P	A-1618-C	A-1618-T	P-1618	B-250-C	C-077
BA-1618-2	138	B-1618-2	BA-1618-P	A-1618-C	A-1618-T	P-1618	B-250-C	C-078
BA-1813-1	154	B-1613-1	BA-1513-P	A-1813-C	A-1813-T	P-2013	B-250-B	C-077
BA-1813-2	155	B-1613-2	BA-1513-P	A-1813-C	A-1813-T	P-2013	B-250-B	C-078
BA-1815-1	160	B-1613-1	BA-1513-P	A-1818-C	A-1818-T	P-2013	B-250-B	C-077
BA-1815-2	161	B-1613-2	BA-1513-P	A-1818-C	A-1818-T	P-2013	B-250-B	C-078
BA-1818-1	166	B-1618-1	BA-1518-P	A-1818-C	A-1818-T	P-2018	B-250-C	C-077
BA-1818-2	167	B-1618-2	BA-1518-P	A-1818-C	A-1818-T	P-2018	B-250-C	C-078
BA-2013-1	183	B-1613-1	BA-1613-P	A-2013-C	A-2013-T	P-2013	B-250-B	C-077
BA-2013-2	184	B-1613-2	BA-1613-P	A-2013-C	A-2013-T	P-2013	B-250-B	C-078
BA-2015-1	189	B-1613-1	BA-1613-P	A-2018-C	A-2018-T	P-2013	B-250-B	C-077
BA-2015-2	190	B-1613-2	BA-1613-P	A-2018-C	A-2018-T	P-2013	B-250-B	C-078
BA-2018-1	195	B-1618-1	BA-1618-P	A-2018-C	A-2018-T	P-2018	B-250-C	C-077
BA-2018-2	196	B-1618-2	BA-1618-P	A-2018-C	A-2018-T	P-2018	B-250-C	C-078
BA-2518-1	212	B-1618-1	BA-1618-P	A-2518-C	A-2518-T	P-2018	B-250-C	C-077
BA-2518-2	213	B-1618-2	BA-1618-P	A-2518-C	A-2518-T	P-2018	B-250-C	C-078
BA-2920-1	217	B-1618-1	BA-2920-P	A-2920-C	A-2920-T	P-2920	B-250-D	C-077
BA-2920-2	218	B-1618-2	BA-2920-P	A-2920-C	A-2920-T	P-2920	B-250-D	C-078
BA-3720-1	220	B-1618-1	BA-2920-P	A-3720-C	A-3720-T	P-2920	B-250-D	C-077
BA-3720-2	221	B-1618-2	BA-2920-P	A-3720-C	A-3720-T	P-2920	B-250-D	C-078



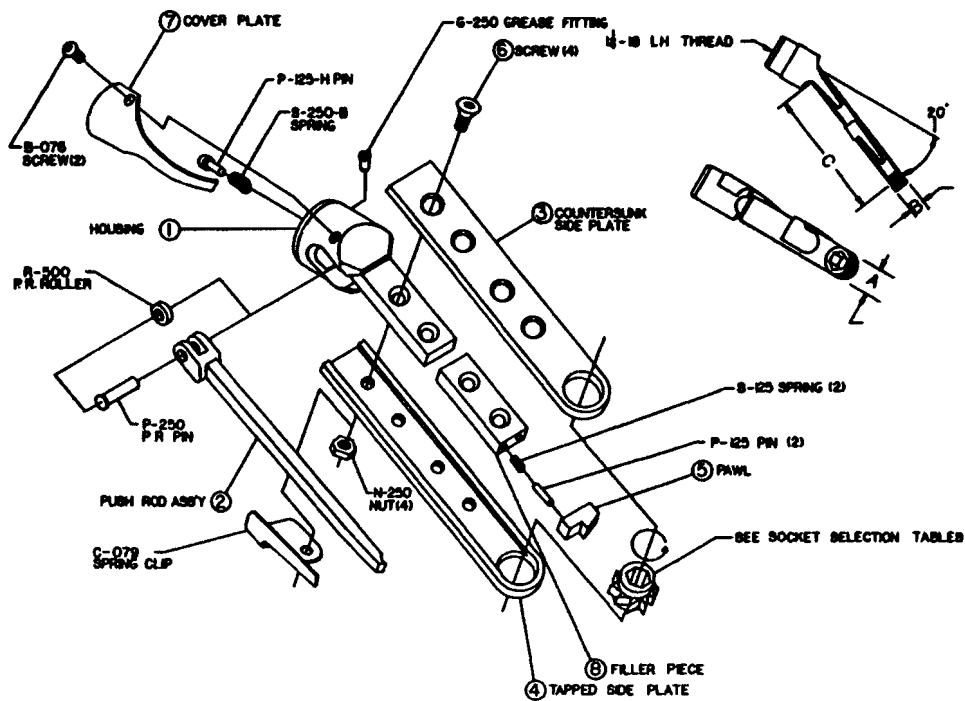
PART NUMBER		1	2	3	4	5	6	7	8
ATTACH. NUMBER	CODE	HOUSING	P.R. ASSEMBLY	CO'SUNK PLATE	TAPPED PLATE	PAWL	S.P. SCREW	COVER PLATE	FILLER PIECE
BB-1413-1	078	B-1613-1	BB-1513-P	B-1413-C	B-1413-T	P-1413	B-250-B	C-077	F-1613
BB-1413-2	079	B-1613-2	BB-1513-P	B-1413-C	B-1413-T	P-1413	B-250-B	C-078	F-1613
BB-1415-1	084	B-1613-1	BB-1513-P	B-1418-C	B-1418-T	P-1413	B-250-B	C-077	F-1613
BB-1415-2	085	B-1613-2	BB-1513-P	B-1418-C	B-1418-T	P-1413	B-250-B	C-078	F-1613
BB-1418-1	090	B-1618-1	BB-1518-P	B-1418-C	B-1418-T	P-1418	B-250-C	C-077	F-1618
BB-1418-2	091	B-1618-2	BB-1518-P	B-1418-C	B-1418-T	P-1418	B-250-C	C-078	F-1618
BC-1418-1	094	B-1618-1	BC-1518-P	C-1418-C	C-1418-T	P-1418	B-250-C	C-077	F-1618
BC-1418-2	095	B-1618-2	BC-1518-P	C-1418-C	C-1418-T	P-1418	B-250-C	C-078	F-1618
BB-1513-1	099	B-1613-1	BB-1513-P	B-1513-C	B-1513-T	P-1613	B-250-B	C-077	F-1613
BB-1513-2	100	B-1613-2	BB-1513-P	B-1513-C	B-1513-T	P-1613	B-250-B	C-078	F-1613
BB-1515-1	105	B-1613-1	BB-1513-P	B-1518-C	B-1518-T	P-1613	B-250-B	C-077	F-1613
BB-1515-2	106	B-1613-2	BB-1513-P	B-1518-C	B-1518-T	P-1613	B-250-B	C-078	F-1613
BB-1518-1	115	B-1618-1	BB-1518-P	B-1518-C	B-1518-T	P-1618	B-250-C	C-077	F-1618
BB-1518-2	116	B-1618-2	BB-1518-P	B-1518-C	B-1518-T	P-1618	B-250-C	C-078	F-1618
BC-1518-1	122	B-1618-1	BC-1518-P	C-1518-C	C-1518-T	P-1618	B-250-C	C-077	F-1618
BC-1518-2	123	B-1618-2	BC-1518-P	C-1518-C	C-1518-T	P-1618	B-250-C	C-078	F-1618
BB-1613-1	128	B-1613-1	BB-1613-P	B-1613-C	B-1613-T	P-1613	B-250-B	C-077	F-1613
BB-1613-2	129	B-1613-2	BB-1613-P	B-1613-C	B-1613-T	P-1613	B-250-B	C-078	F-1613
BB-1615-1	134	B-1613-1	BB-1613-P	B-1618-C	B-1618-T	P-1613	B-250-B	C-077	F-1613
BB-1615-2	135	B-1613-2	BB-1613-P	B-1618-C	B-1618-T	P-1613	B-250-B	C-078	F-1613
BB-1618-1	144	B-1618-1	BB-1618-P	B-1618-C	B-1618-T	P-1618	B-250-C	C-077	F-1618
BB-1618-2	145	B-1618-2	BB-1618-P	B-1618-C	B-1618-T	P-1618	B-250-C	C-078	F-1618
BC-1618-1	151	B-1618-1	BC-1618-P	C-1618-C	C-1618-T	P-1618	B-250-C	C-077	F-1618
BC-1618-2	152	B-1618-2	BC-1618-P	C-1618-C	C-1618-T	P-1618	B-250-C	C-078	F-1618
BB-1813-1	157	B-1613-1	BB-1513-P	B-1813-C	B-1813-T	P-2013	B-250-B	C-077	F-1613
BB-1813-2	158	B-1613-2	BB-1513-P	B-1813-C	B-1813-T	P-2013	B-250-B	C-078	F-1613
BB-1815-1	163	B-1613-1	BB-1513-P	B-1818-C	B-1818-T	P-2013	B-250-B	C-077	F-1613
BB-1815-2	164	B-1613-2	BB-1513-P	B-1818-C	B-1818-T	P-2013	B-250-B	C-078	F-1613
BB-1818-1	173	B-1618-1	BB-1518-P	B-1818-C	B-1818-T	P-2018	B-250-C	C-077	F-1618
BB-1818-2	174	B-1618-2	BB-1518-P	B-1818-C	B-1818-T	P-2018	B-250-C	C-078	F-1618
BC-1818-1	180	B-1618-1	BC-1518-P	C-1818-C	C-1818-T	P-2018	B-250-C	C-077	F-1618
BC-1818-2	181	B-1618-2	BC-1518-P	C-1818-C	C-1818-T	P-2018	B-250-C	C-078	F-1618
BB-2013-1	186	B-1613-1	BB-1613-P	B-2013-C	B-2013-T	P-2013	B-250-B	C-077	F-1613
BB-2013-2	187	B-1613-2	BB-1613-P	B-2013-C	B-2013-T	P-2013	B-250-B	C-078	F-1613
BB-2015-1	192	B-1613-1	BB-1613-P	B-2018-C	B-2018-T	P-2013	B-250-B	C-077	F-1613
BB-2015-2	193	B-1613-2	BB-1613-P	B-2018-C	B-2018-T	P-2013	B-250-B	C-078	F-1613
BB-2018-1	202	B-1618-1	BB-1618-P	B-2018-C	B-2018-T	P-2018	B-250-C	C-077	F-1618
BB-2018-2	203	B-1618-2	BB-1618-P	B-2018-C	B-2018-T	P-2018	B-250-C	C-078	F-1618
BC-2018-1	209	B-1618-1	BC-1618-P	C-2018-C	C-2018-T	P-2018	B-250-C	C-077	F-1618
BC-2018-2	210	B-1618-2	BC-1618-P	C-2018-C	C-2018-T	P-2018	B-250-C	C-078	F-1618



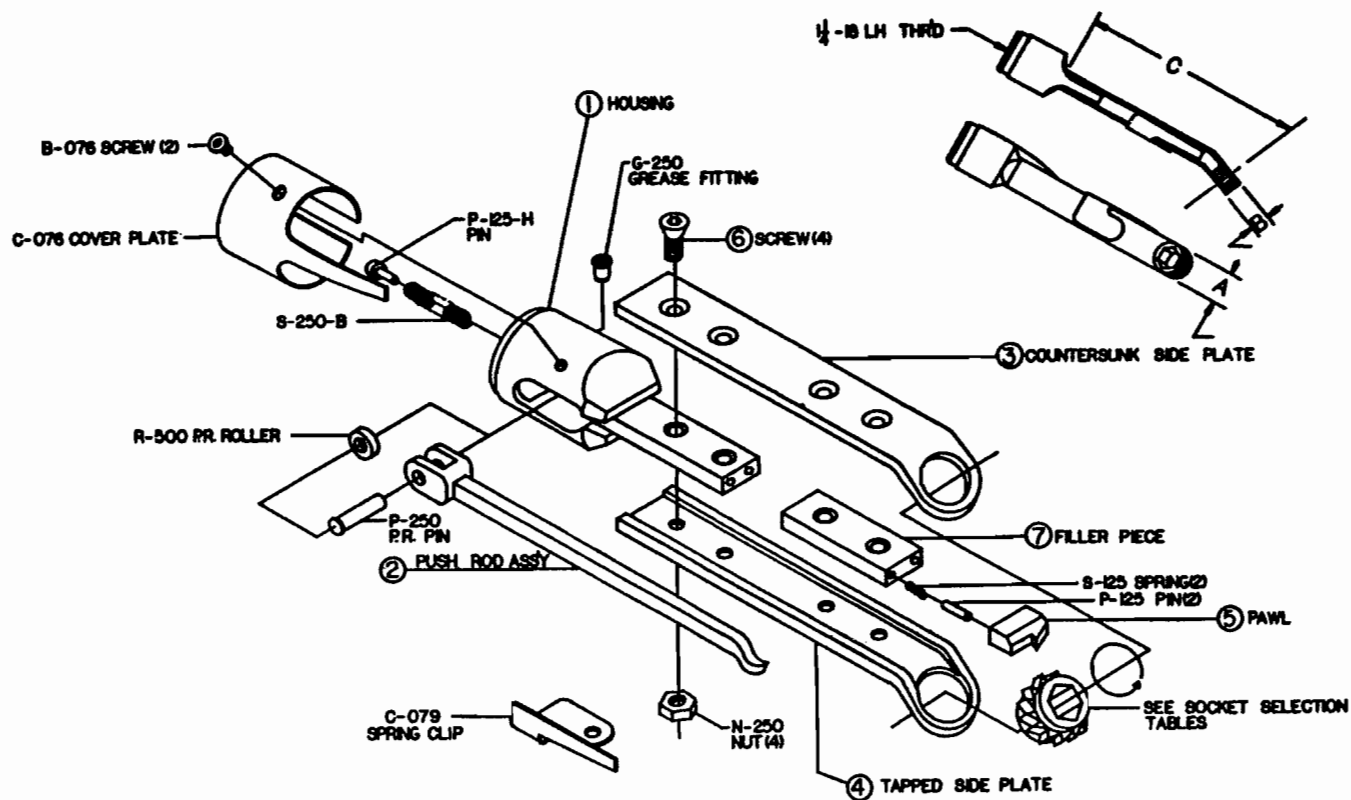
PART NUMBER		1	2	3	4	5	6
ATTACH. NUMBER	CODE	HOUSING	P.R. ASSEMBLY	CO'SUNK PLATE	TAPPED PLATE	PAWL	S.P. SCREW
BA-1518-3	110	B-1618	BA-1618-3P	A-1518-3C	A-1518-3T	P-1618-3	B-250-C
BA-1518-4	111	B-1618	BA-1618-4P	A-1518-3C	A-1518-3T	P-1618-4	B-250-C
BA-1618-3	139	B-1618	BA-1618-3P	A-1618-3C	A-1618-3T	P-1618-3	B-250-C
BA-1618-4	140	B-1618	BA-1618-4P	A-1618-3C	A-1618-3T	P-1618-4	B-250-C
BA-1818-3	168	B-1618	BA-1618-3P	A-1818-3C	A-1818-3T	P-1818-3	B-250-C
BA-1818-4	169	B-1618	BA-1618-4P	A-1818-3C	A-1818-3T	P-1818-4	B-250-C
BA-2018-3	197	B-1618	BA-1618-3P	A-2018-3C	A-2018-3T	P-2018-3	B-250-C
BA-2018-4	198	B-1618	BA-1618-4P	A-2018-3C	A-2018-3T	P-2018-4	B-250-C



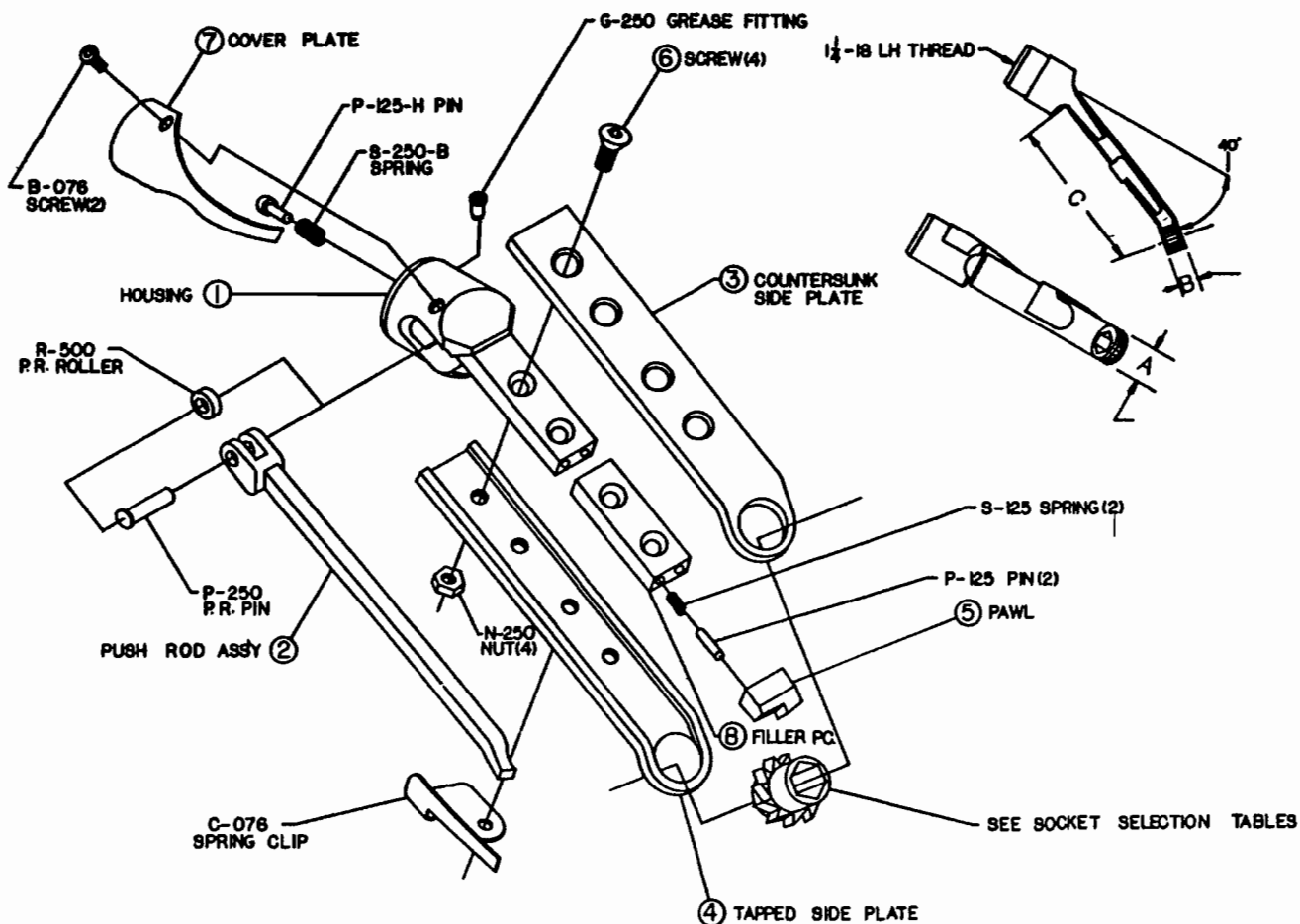
PART NUMBER		1	2	3	4	5	6	7
ATTACH. NUMBER	CODE	HOUSING	P.R. ASSEMBLY	CO'SUNK PLATE	TAPPED PLATE	PAWL	S.P. SCREW	COVER PLATE
BA-1518-5	112	B-1618-1	BA-1618-3P	A-1518-3C	A-1518-3T	P-1618-3	B-250-C	C-077
BA-1518-6	113	B-1618-2	BA-1618-4P	A-1518-3C	A-1518-3T	P-1618-4	B-250-C	C-078
BA-1618-5	141	B-1618-1	Ba-1618-3P	A-1618-3C	A-1618-3T	P-1618-3	B-250-C	C-077
BA-1618-6	142	B-1618-2	BA-1618-4P	A-1618-3C	A-1618-3T	P-1618-4	B-250-C	C-078
BA-1818-5	170	B-1618-1	BA-1618-3P	A-1818-3C	A-1818-3T	P-1818-3	B-250-C	C-077
BA-1818-6	171	B-1618-2	BA-1618-4P	A-1818-3C	A-1818-3T	P-1818-4	B-250-C	C-078
BA-2018-5	199	B-1618-1	BA-1618-3P	A-2018-3C	A-2018-3T	P-2018-3	B-250-C	C-077
BA-2018-6	200	B-1618-2	BA-1618-4P	A-2018-3C	A-2018-3T	P-2018-4	B-250-C	C-078



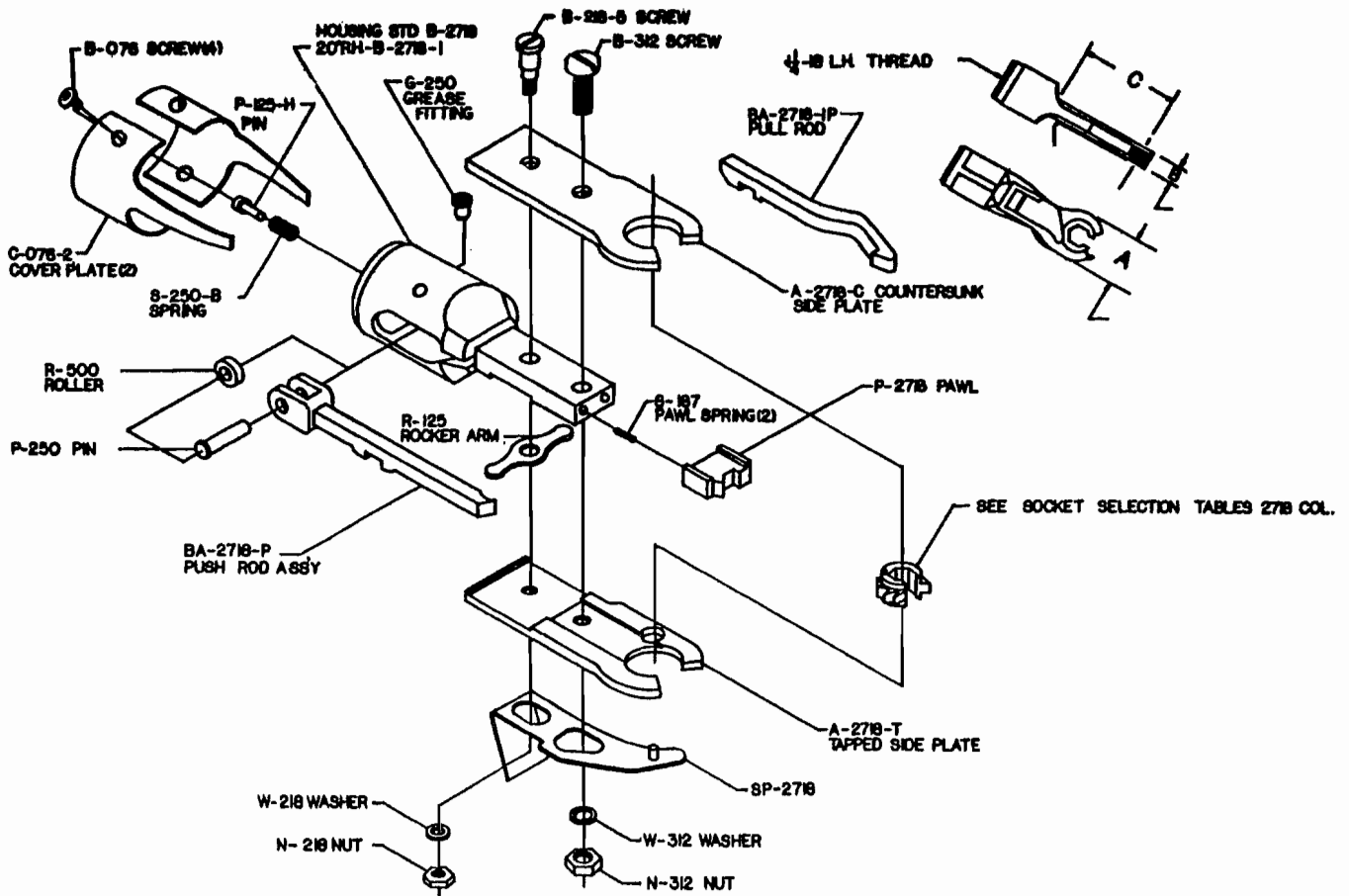
PART NUMBER		1	2	3	4	5	6	7	8
ATTACH. NUMBER	CODE	HOUSING	P.R. ASSEMBLY	CO'SUNK PLATE	TAPPED PLATE	PAWL	S.P. SCREW	COVER PLATE	FILLER PIECE
BB-1413-1	078	B-1613-1	BB-1513-P	B-1413-C	B-1413-T	P-1413	B-250-B	C-077	F-1613
BB-1413-2	079	B-1613-2	BB-1513-P	B-1413-C	B-1413-T	P-1413	B-250-B	C-078	F-1613
BB-1415-1	084	B-1613-1	BB-1513-P	B-1418-C	B-1418-T	P-1413	B-250-B	C-077	F-1613
BB-1415-2	085	B-1613-2	BB-1513-P	B-1418-C	B-1418-T	P-1413	B-250-B	C-078	F-1613
BB-1418-1	090	B-1618-1	BB-1518-P	B-1418-C	B-1418-T	P-1418	B-250-C	C-077	F-1618
BB-1418-2	091	B-1618-2	BB-1518-P	B-1418-C	B-1418-T	P-1418	B-250-C	C-078	F-1618
BC-1418-1	094	B-1618-1	BC-1518-P	C-1418-C	C-1418-T	P-1418	B-250-C	C-077	F-1618
BC-1418-2	095	B-1618-2	BC-1518-P	C-1418-C	C-1418-T	P-1418	B-250-C	C-078	F-1618
BB-1513-1	099	B-1613-1	BB-1513-P	B-1513-C	B-1513-T	P-1613	B-250-B	C-077	F-1613
BB-1513-2	100	B-1613-2	BB-1513-P	B-1513-C	B-1513-T	P-1613	B-250-B	C-078	F-1613
BB-1515-1	105	B-1613-1	BB-1513-P	B-1518-C	B-1518-T	P-1613	B-250-B	C-077	F-1613
BB-1515-2	106	B-1613-2	BB-1513-P	B-1518-C	B-1518-T	P-1613	B-250-B	C-078	F-1613
BB-1518-1	115	B-1618-1	BB-1518-P	B-1518-C	B-1518-T	P-1618	B-250-C	C-077	F-1618
BB-1518-2	116	B-1618-2	BB-1518-P	B-1518-C	B-1518-T	P-1618	B-250-C	C-078	F-1618
BC-1518-1	122	B-1618-1	BC-1518-P	C-1518-C	C-1518-T	P-1618	B-250-C	C-077	F-1618
BC-1518-2	123	B-1618-2	BC-1518-P	C-1518-C	C-1518-T	P-1618	B-250-C	C-078	F-1618
BB-1613-1	128	B-1613-1	BB-1613-P	B-1613-C	B-1613-T	P-1613	B-250-B	C-077	F-1613
BB-1613-2	129	B-1613-2	BB-1613-P	B-1613-C	B-1613-T	P-1613	B-250-B	C-078	F-1613
BB-1615-1	134	B-1613-1	BB-1613-P	B-1618-C	B-1618-T	P-1613	B-250-B	C-077	F-1613
BB-1615-2	135	B-1613-2	BB-1613-P	B-1618-C	B-1618-T	P-1613	B-250-B	C-078	F-1613
BB-1618-1	144	B-1618-1	BB-1618-P	B-1618-C	B-1618-T	P-1618	B-250-C	C-077	F-1618
BB-1618-2	145	B-1618-2	BB-1618-P	B-1618-C	B-1618-T	P-1618	B-250-C	C-078	F-1618
BC-1618-1	151	B-1618-1	BC-1618-P	C-1618-C	C-1618-T	P-1618	B-250-C	C-077	F-1618
BC-1618-2	152	B-1618-2	BC-1618-P	C-1618-C	C-1618-T	P-1618	B-250-C	C-078	F-1618
BB-1813-1	157	B-1613-1	BB-1513-P	B-1813-C	B-1813-T	P-2013	B-250-B	C-077	F-1613
BB-1813-2	158	B-1613-2	BB-1513-P	B-1813-C	B-1813-T	P-2013	B-250-B	C-078	F-1613
BB-1815-1	163	B-1613-1	BB-1513-P	B-1818-C	B-1818-T	P-2013	B-250-B	C-077	F-1613
BB-1815-2	164	B-1613-2	BB-1513-P	B-1818-C	B-1818-T	P-2013	B-250-B	C-078	F-1613
BB-1818-1	173	B-1618-1	BB-1518-P	B-1818-C	B-1818-T	P-2018	B-250-C	C-077	F-1618
BB-1818-2	174	B-1618-2	BB-1518-P	B-1818-C	B-1818-T	P-2018	B-250-C	C-078	F-1618
BC-1818-1	180	B-1618-1	BC-1518-P	C-1818-C	C-1818-T	P-2018	B-250-C	C-077	F-1618
BC-1818-2	181	B-1618-2	BC-1518-P	C-1818-C	C-1818-T	P-2018	B-250-C	C-078	F-1618
BB-2013-1	186	B-1613-1	BB-1613-P	B-2013-C	B-2013-T	P-2013	B-250-B	C-077	F-1613
BB-2013-2	187	B-1613-2	BB-1613-P	B-2013-C	B-2013-T	P-2013	B-250-B	C-078	F-1613
BB-2015-1	192	B-1613-1	BB-1613-P	B-2018-C	B-2018-T	P-2013	B-250-B	C-077	F-1613
BB-2015-2	193	B-1613-2	BB-1613-P	B-2018-C	B-2018-T	P-2013	B-250-B	C-078	F-1613
BB-2018-1	202	B-1618-1	BB-1618-P	B-2018-C	B-2018-T	P-2018	B-250-C	C-077	F-1618
BB-2018-2	203	B-1618-2	BB-1618-P	B-2018-C	B-2018-T	P-2018	B-250-C	C-078	F-1618
BC-2018-1	209	B-1618-1	BC-1618-P	C-2018-C	C-2018-T	P-2018	B-250-C	C-077	F-1618
BC-2018-2	210	B-1618-2	BC-1618-P	C-2018-C	C-2018-T	P-2018	B-250-C	C-078	F-1618



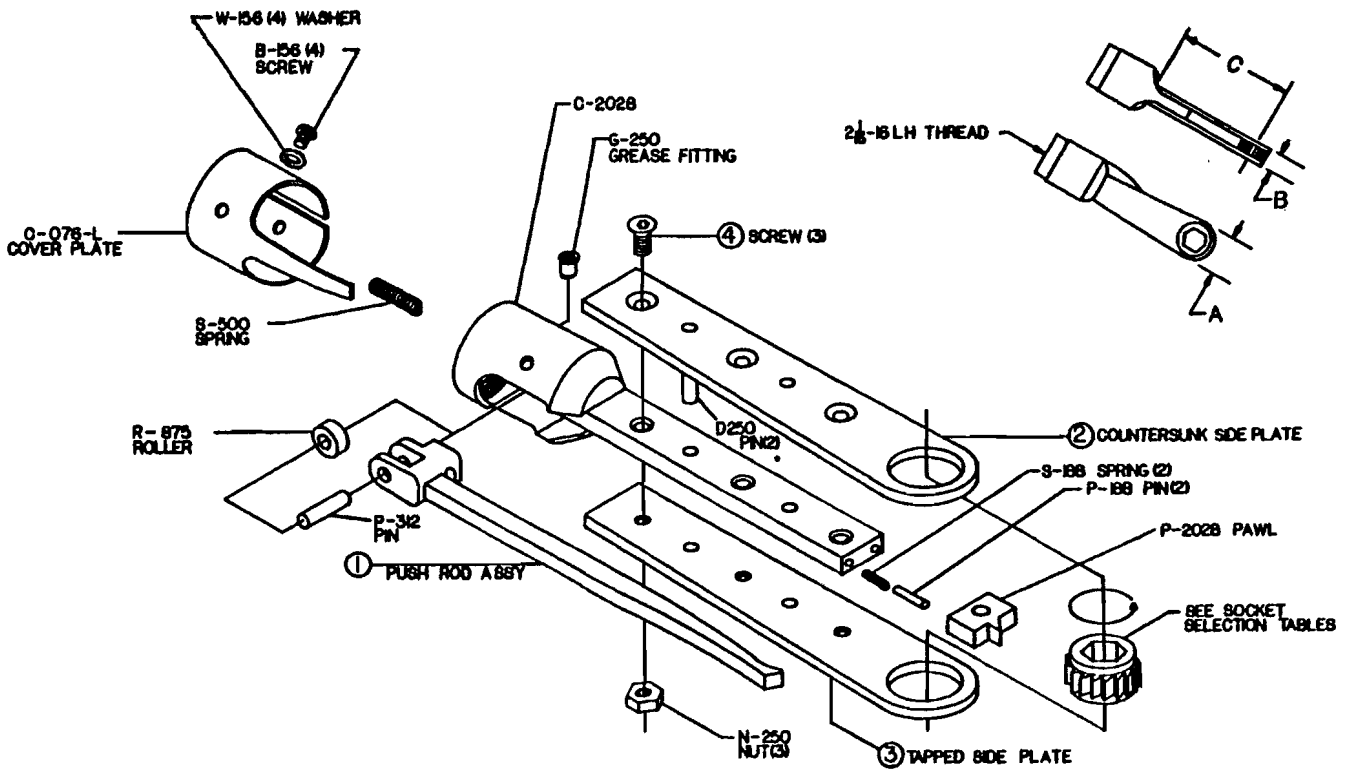
PART NUMBER		1	2	3	4	5	6	7
ATTACH. NUMBER	CODE	HOUSING	P.R. ASSEMBLY	CO'SUNK PLATE	TAPPED PLATE	PAWL	S.P. SCREW	FILLER PIECE
BB-1518-3	117	B-1618	BB-1618-3P	B-1518-3C	B-1518-3T	P-1618-3	B-250-C	F-1618
BB-1518-4	118	B-1618	BB-1618-4P	B-1518-3C	B-1518-3T	P-1618-4	B-250-C	F-1618
BB-1618-3	146	B-1618	BB-1618-3P	B-1618-3C	B-1618-3T	P-1618-3	B-250-C	F-1618
BB-1618-4	147	B-1618	BB-1618-4P	B-1618-3C	B1618-3T	P-1618-4	B-250-C	F-1618
BB-1818-3	175	B-1618	BB-1618-3P	B-1818-3C	B-1818-3T	P-1818-3	B-250-C	F-1618
BB-1818-4	176	B-1618	BB-1618-4P	B-1818-3C	B-1818-3T	P-1818-4	B-250-C	F-1618
BB-2018-3	204	B-1618	BB-1618-3P	B-2018-3C	B-2018-3T	P-2018-3	B-250-C	F-1618
BB-2018-4	205	B-1618	BB-1618-4P	B-2018-3C	B-2018-3T	P-2018-4	B-250-C	F-1618



PART NUMBER		1	2	3	4	5	6	7	8
ATTACH. NUMBER	CODE	HOUSING	P.R. ASSEMBLY	CO'SUNK PLATE	TAPPED PLATE	PAWL	S.P. SCREW	COVER PLATE	FILLER PIECE
BB-1518-5	119	B-1618-1	BB-1618-3P	B-1518-3C	B-1518-3T	P-1618-3	B-250-C	C-077	F-1618
BB-1518-6	120	B-1618-2	BB-1618-4P	B-1518-3C	B-1518-3T	P-1618-4	B-250-C	C-078	F-1618
BB-1618-5	148	B-1618-1	BB-1618-3P	B-1618-3C	B-1618-3T	P-1618-3	B-250-C	C-077	F-1618
BB-1618-6	149	B-1618-2	BB-1618-4P	B-1618-3C	B-1618-3T	P-1618-4	B-250-C	C-078	F-1618
BB-1818-5	177	B-1618-1	BB-1618-3P	B-1818-3C	B-1818-3T	P-1818-3	B-250-C	C-077	F-1618
BB-1818-6	178	B-1618-2	BB-1618-4P	B-1818-3C	B-1818-3T	P-1818-4	B-250-C	C-078	F-1618
BB-2018-5	206	B-1618-1	BB-1618-3P	B-2018-3C	B-2018-3T	P-2018-3	B-250-C	C-077	F-1618
BB-2018-6	207	B-1618-2	BB-1618-4P	B-2018-3C	B-2018-3T	P-2018-4	B-250-C	C-078	F-1618



ATTACH. NUMBER	CODE	
BA-2718	214	
BA-2718-1	215	**Use (1) Each C-077 & C-078 Cover Plate



PART NUMBER		1	2	3	4
ATTACH. NUMBER	CODE	P.R. ASSEMBLY	CO'SUNK PLATE	TAPPED PLATE	S.P. SCREW
CA-2028	240	CA-2028-P	A-2028-C	A-2028-T	B-250-E
CA-2428	241	CA-2428-P	A-2428-C	A-2428-T	B-250-E
CA-3228	242	CA-3228-P	A-3228-C	A-3228-T	B-250-E
CA-4028	243	CA-4028-P	A-4028-C	A-4028-T	B-250-E
CA-4832	244	CA-4832-P	A-4832-C	A-4832-T	B-250-F
CA-5632	245	CA-4832-P	A-5632-C	A-5632-T	B-250-F

Ratchet Wrench Sockets

Extended Sockets are available in all sizes. To order an Extended Socket add one of the following suffixes to the Socket Number. Also add, in fraction form, the length of extension desired, in 1/16" increments.

Suffix	Description
ER	Extended Right Hand
EL	Extended Left Hand
EB	Extended Both Sides

Example: To order Socket 121614, right hand extended 1/4", order: 121614ER4

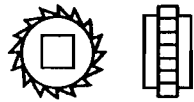
Also available on special order are magnetic, blind hex, threaded, grooved, "A" construction, single square and double square sockets.

Use the following suffixes for ordering:

Suffix	Description
MS	Magnetic Solid (indicate hex depth)
MH	Magnetic Hollow (indicate hex depth and thru hole)
BH	Blind hex (hex part way thru)
T	Threaded (indicate thread size)
G	Grooved
SS	Single Square
DS	Double Square



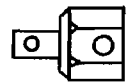
Hex Sockets



Square Sockets



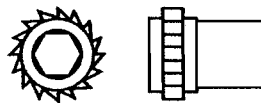
Shoulder Sockets



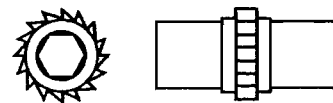
Power Socket Adapters



Open End Sockets



Extended Sockets
One Side
Right Hand or Left Hand



Extended Sockets
Both Sides

Thin Sockets

Fractional Inch Sizes

Hex Socket Distance Across Flats		Side Plate Width A												
		9/16"	3/4"	13/16"	7/8"	15/16"	1"	1 1/8"	1 1/4"					
		Ratchet Head and Socket Thickness B												
		5/16"	11/32"	11/32"	13/32"	15/32"	13/32"	15/32"	13/32"	15/32"	13/32"	15/32"	13/32"	15/32"
		Socket Part Number												
3/16"	S.H.	091000	121100	131100										
	D.H.	091001	121101	131101										
7/32"	S.H.	091002	121102	131102										
	D.H.	091003	121103	131103										
1/4"	S.H.	091004	121104	131104	141304	141504	151304	151504	161304	161504				
	D.H.	091005	121105	131105	141305	141505	151305	151505	161305	161505				
9/32"	S.H.		121106	131106	141306	141506	151306	151506	161306	161506				
	D.H.		121107	131107	141307	141507	151307	151507	161307	161507				
5/16"	S.H.		121108	131108	141308	141508	151308	151508	161308	161508	181308	181508	201308	201508
	D.H.		121109	131109	141309	141509	151309	151509	161309	161509	181309	181509	201309	201509
11/32"	S.H.		121110	131110	141310	141510	151310	151510	161310	161510	181310	181510	201310	201510
	D.H.		121111	131111	141311	141511	151311	151511	161311	161511	181311	181511	201311	201511
3/8"	S.H.		121112	131112	141312	141512	151312	151512	161312	161512	181312	181512	201312	201512
	D.H.		121113	131113	141313	141513	151313	151513	161313	161513	181313	181513	201313	201513
7/16"	S.H.		121114*	131114	141314	141514	151314	151514	161314	161514	181314	181514	201314	201514
	D.H.		121115*	131115	141315	141515	151315	151515	161315	161515	181315	181515	201315	201515
1/2"	S.H.			131116*	141316	141516	151316	151516	161316	161516	181316	181516	201316	201516
	D.H.			131117*	141317	141517	151317	151517	161317	161517	181317	181517	201317	201517
9/16"	S.H.								161318	161518	181318	181518	201318	201518
	D.H.								161319	161519	181319	181519	201319	201519
5/8"	S.H.								161320	161520	181320	181520	201320	201520
	D.H.								161321	161521	181321	181521	201321	201521
11/16"	S.H.												201322	201522
	D.H.												201323	201523
3/4"	S.H.												201324	201524
	D.H.												201325	201525

*Fragile Socket—for light operation only.

Ratchet Wrench Sockets

Standard Thickness Sockets

Fractional Inch Sizes

Hex Socket Distance Across Flats		Side Plate Width A										
		3/4"	13/16"	7/8"	15/16"	1"	1 1/8"	1 1/4"	1 9/16"	Open End	1 13/16"	2 5/16"
		Ratchet Head and Socket Thickness B										
		1/2"		9/16"							5/8"	
		Socket Part Number										
3/16"	S.H.	121600	131600									
	D.H.	121601	131601									
7/32"	S.H.	121602	131602									
	D.H.	121603	131603									
1/4"	S.H.	121604	131604	141804	151804	161804						
	D.H.	121605	131605	141805	151805	161805						
9/32"	S.H.	121606	131606	141806	151806	161806						
	D.H.	121607	131607	141807	151807	161807						
5/16"	S.H.	121608	131608	141808	151808	161808	181808	201808	251808			
	D.H.	121609	131609	141809	151809	161809	181809	201809	251809			
1 1/32"	S.H.	121610	131610	141810	151810	161810	181810	201810	251810			
	D.H.	121611	131611	141811	151811	161811	181811	201811	251811			
3/8"	S.H.	121612	131612	141812	151812	161812	181812	201812	251812	271812		
	D.H.	121613	131613	141813	151813	161813	181813	201813	251813	271813		
7/16"	S.H.	121614*	131614	141814	151814	161814	181814	201814	251814	271814	292014	372014
	D.H.	121615*	131615	141815	151815	161815	181815	201815	251815	271815	292015	372015
1/2"	S.H.		131616*	141816	151816	161816	181816	201816	251816	271816	292016	372016
	D.H.		131617*	141817	151817	161817	181817	201817	251817	271817	292017	372017
9/16"	S.H.					161818	181818	201818	251818	271818	292018	372018
	D.H.					161819	181819	201819	251819	271819	292019	372019
5/8"	S.H.					161820*	181820	201820	251820	271820	292020	372020
	D.H.					161821*	181821	201821	251821	271821	292021	372021
1 1/16"	S.H.							201822	251822	271822	292022	372022
	D.H.							201823	251823	271823	292023	372023
3/4"	S.H.							201824	251824	271824*	292024	372024
	D.H.							201825	251825	271825*	292025	372025
13/16"	S.H.								251826		292026	372026
	D.H.								251827		292027	372027
7/8"	S.H.								251828		292028	372028
	D.H.								251829		292029	372029
15/16"	S.H.								251830		292030	372030
	D.H.								251831		292031	372031
1"	S.H.										292032	372032
	D.H.										292033	372033
1 1/16"	S.H.										292034	372034
	D.H.										292035	372035
1 1/8"	S.H.										292036	372036
	D.H.										292037	372037
1 3/16"	S.H.										292038	372038
	D.H.										292039	372039
1 1/4"	S.H.											372040
	D.H.											372041
1 5/16"	S.H.											372042
	D.H.											372043
1 7/16"	S.H.											372044
	D.H.											372045
1 1/2"	S.H.											372046
	D.H.											372047
1 5/8"	S.H.											372048
	D.H.											372049

*Fragile Socket—for light operation only.

Ratchet Wrench Sockets

Thin Sockets

Metric Sizes

Hex Socket Distance Across Flats		Side Plate Width A												
		9/16"	3/4"	13/16"	7/8"	15/16"	1"	1 1/8"	1 1/4"					
		Ratchet Head and Socket Thickness B												
		5/16"	11/32"	11/32"	13/32"	15/32"	13/32"	15/32"	13/32"	15/32"	13/32"	15/32"	13/32"	15/32"
		Socket Part Number												
5 mm	S.H. D.H.	091050 091051	121150 121151	131150 131151										
6 mm	S.H. D.H.	091052 091053	121152 121153	131152 131153										
7 mm	S.H. D.H.		121154 121155	131154 131155	141354 141355	141554 141555	151354 151355	151554 151555	161354 161355	161554 161555				
8 mm	S.H. D.H.		121156 121157	131156 131157	141356 141357	141556 141557	151356 151357	151556 151557	161356 161357	161556 161557	181356 181357	181556 181557	201356 201357	201556 201557
9 mm	S.H. D.H.		121158 121159	131158 131159	141358 141359	141558 141559	151358 151359	151558 151559	161358 161359	161558 161559	181358 181359	181558 181559	201358 201359	201558 201559
10 mm	S.H. D.H.		121160 121161	131160 131161	141360 141361	141560 141561	151360 151361	151560 151561	161360 161361	161560 161561	181360 181361	181560 181561	201360 201361	201560 201561
11 mm	S.H. D.H.		121162* 121163*	131162 131163	141362 141363	141562 141563	151362 151363	151562 151563	161362 161363	161562 161563	181362 181363	181562 181563	201362 201363	201562 201563
12 mm	S.H. D.H.			131164 131165	141364 141365	141564 141565	151364 151365	151564 151565	161364 161365	161564 161565	181364 181365	181564 181565	201364 201365	201564 201565
13 mm	S.H. D.H.			131166* 131167*	141366 141367	141566 141567	151366 151367	151566 151567	161366 161367	161566 161567	181366 181367	181566 181567	201366 201367	201566 201567
14 mm	S.H. D.H.				141368 141369	141568 141569	151368 151369	151568 151569	161368 161369	161568 161569	181368 181369	181568 181569	201368 201369	201568 201569
15 mm	S.H. D.H.								161370 161371	161570 161571	181370 181371	181570 181571	201370 201371	201570 201571
16 mm	S.H. D.H.								161372 161373	161572 161573	181372 181373	181572 181573	201372 201373	201572 201573
17 mm	S.H. D.H.												201374 201375	201574 201575
18 mm	S.H. D.H.												201376 201377	201576 201577
19 mm	S.H. D.H.												201378 201379	201578 201579

*Fragile Socket—for light operation only.

Ratchet Wrench Sockets

Standard Thickness Sockets

Metric Sizes

Hex Socket Distance Across Flats		Side Plate Width A										
		3/4"	13/16"	7/8"	15/16"	1"	1 1/8"	1 1/4"	1 9/16"	Open End	1 13/16"	2 5/16"
		Ratchet Head and Socket Thickness B										
		1/2"	9/16"								5/8"	
		Socket Part Number										
5 mm	S.H.	121650	131650									
	D.H.	121651	131651									
6 mm	S.H.	121652	121652									
	D.H.	121653	131653									
7 mm	S.H.	121654	131654	141854	151854	161854						
	D.H.	121655	131655	141855	151855	161855						
8 mm	S.H.	121656	131656	141856	151856	161856	181856	201856	251856	271856	292056	372056
	D.H.	121657	131657	141857	151857	161857	181857	201857	251857	271857	292057	372057
9 mm	S.H.	121658	131658	141858	151858	161858	181858	201858	251858	271858	292058	372058
	D.H.	121659	131659	141859	151859	161859	181859	201859	251859	271859	292059	372059
10 mm	S.H.	121660	131660	141860	151860	161860	181860	201860	251860	271860	292060	372060
	D.H.	121661	131661	141861	151861	161861	181861	201861	251861	271861	292061	372061
11 mm	S.H.	121662*	131662	141862	151862	161862	181862	201862	251862	271862	292062	372062
	D.H.	121663*	131663	141863	151863	161863	181863	201863	251863	271863	292063	372063
12 mm	S.H.		131664	141864	151864	161864	181864	201864	251864	271864	292064	372064
	D.H.		131665	141865	151865	161865	181865	201865	251865	271865	292065	372065
13 mm	S.H.		131666*	141866	151866	161866	181866	201866	251866	271866	292066	372066
	D.H.		131667*	141867	151867	161867	181867	201867	251867	271867	292067	372067
14 mm	S.H.			141868	151868	161868	181868	201868	251868	271868	292068	372068
	D.H.			141869	151869	161869	181869	201869	251869	271869	292069	372069
15 mm	S.H.					161870*	181870	201870	251870	271870*	292070	372070
	D.H.					161871*	181871	201871	251871	271871*	292071	372071
16 mm	S.H.					161872	181872	201872	251872	271872	292072	372072
	D.H.					161873	181873	201873	251873	271873	292073	372073
17 mm	S.H.							201874	251874	271874	292074	372074
	D.H.							201875	251875	271875	292075	372075
18 mm	S.H.							201876	251876	271876	292076	372076
	D.H.							201877	251877	271877	292077	372077
19 mm	S.H.							201878	251878	271878*	292078	372078
	D.H.							201879	251879	271879*	292079	372079
21 mm	S.H.								251882		292082	372082
	D.H.								251883		292083	372083
22 mm	S.H.								251884		292084	372084
	D.H.								251885		292085	372085
23 mm	S.H.								251886		292086	372086
	D.H.								251887		292087	372087
24 mm	S.H.								251888		292088	372088
	D.H.								251889		292089	372089
27 mm	S.H.										292094	372094
	D.H.										292095	372095
29 mm	S.H.										292098	372098
	D.H.										292099	372099

*Fragile Socket--for light operation only.

Socket Selection Table

Heavy Duty Sockets

Fractional Inch Sizes

"A" Side Plate Width		1 1/4"	1 1/2"	2"	2 1/2"	3"	3 1/2"
"B" Thickness (Attachment & Socket)		7/8"				1"	
7/16"	S.H.	202814	242814	322814	402814	483214	563214
	D.H.	202815	242815	322815	402815	483215	563215
1/2"	S.H.	202816	242816	322816	402816	483216	563216
	D.H.	202817	242817	322817	402817	483217	563217
9/16"	S.H.	202818	242818	322818	402818	483218	563218
	D.H.	202819	242819	322819	402819	483219	563219
5/8"	S.H.	202820	242820	322820	402820	483220	563220
	D.H.	202821	242821	322821	402821	483221	563221
1 1/16"	S.H.		242822	322822	402822	483222	563222
	D.H.		242823	322823	402823	483223	563223
3/4"	S.H.		242824	322824	402824	483224	563224
	D.H.		242825	322825	402825	483225	563225
1 3/16"	S.H.		242826	322826	402826	483226	563226
	D.H.		242827	322827	402827	483227	563227
7/8"	S.H.		242828	322828	402828	483228	563228
	D.H.		242829	322829	402829	483229	563229
1 5/16"	S.H.			322830	402830	483230	563230
	D.H.			322831	402831	483231	563231
1"	S.H.			322832	402832	483232	563232
	D.H.			322833	402833	483233	563233
1 1/16"	S.H.			322834	402834	483234	563234
	D.H.			322835	402835	483235	563235
1 1/8"	S.H.			322836	402836	483236	563236
	D.H.			322837	402837	483237	563237
1 3/16"	S.H.				402838	483238	563238
	D.H.				402839	483239	563239
1 1/4"	S.H.				402840	483240	563240
	D.H.				402841	483241	563241
1 5/16"	S.H.				402842	483242	563242
	D.H.				402843	483243	563243
1 7/16"	S.H.				402844	483244	563244
	D.H.				402845	483245	563245
1 1/2"	S.H.				402846	483246	563246
	D.H.				402847	483247	563247
1 5/8"	S.H.					483248	563248
	D.H.					483249	563249

Socket Selection Table

Heavy Duty Sockets

Metric Sizes

"A" Side Plate Width		1¼"	1½"	2"	2½"	3"	3½"
"B" Thickness (Attachment & Socket)		⅞"				1"	
12 MM	S.H.	202863	242864	322864	402864	483264	563264
	D.H.	202865	242865	322865	402865	483265	563265
13 MM	S.H.	202866	242866	322866	402866	483266	563266
	D.H.	202867	242867	322867	402867	483267	563267
14 MM	S.H.	202868	242868	322868	402868	483268	563268
	D.H.	202869	242869	322869	402869	483269	563269
15 MM	S.H.	202870	242870	322870	402870	483270	563270
	D.H.	202871	242871	322871	402871	483271	563271
16 MM	S.H.		242872	322872	402872	483272	563272
	D.H.		242873	322873	402873	483273	563273
17 MM	S.H.		242874	322874	402874	483274	563274
	D.H.		242875	322875	402875	483275	563275
18 MM	S.H.		242876	322876	402876	483276	563276
	D.H.		242877	322877	402877	483277	563277
19 MM	S.H.		242878	322878	402878	483278	563278
	D.H.		242879	322879	402879	483279	563279
21 MM	S.H.			322882	402882	483282	563282
	D.H.			322883	402883	483283	563283
22 MM	S.H.			322834	402884	483284	563284
	D.H.			322885	402885	483285	563285
23 MM	S.H.			322886	402886	483286	563286
	D.H.			322887	402887	483287	563287
24 MM	S.H.			322888	402888	483288	563288
	D.H.			322889	402889	483289	563289
27 MM	S.H.			322894	402894	483294	563294
	D.H.			322895	402895	483295	563295
29 MM	S.H.			322898	402898	483298	563298
	D.H.			322899	402899	483299	563299